

ACADIANA LOAD POCKET RELIABILITY PROJECT

A yellow silhouette of the state of Louisiana is centered on the slide. Overlaid on the map is the text 'Cleco Power, Entergy, LEPA, LUS and SLEMCO'.

**Cleco Power,
Entergy,
LEPA,
LUS and
SLEMCO**

Utilities working together for reliable power

What is the Acadiana Load Pocket (ALP)?

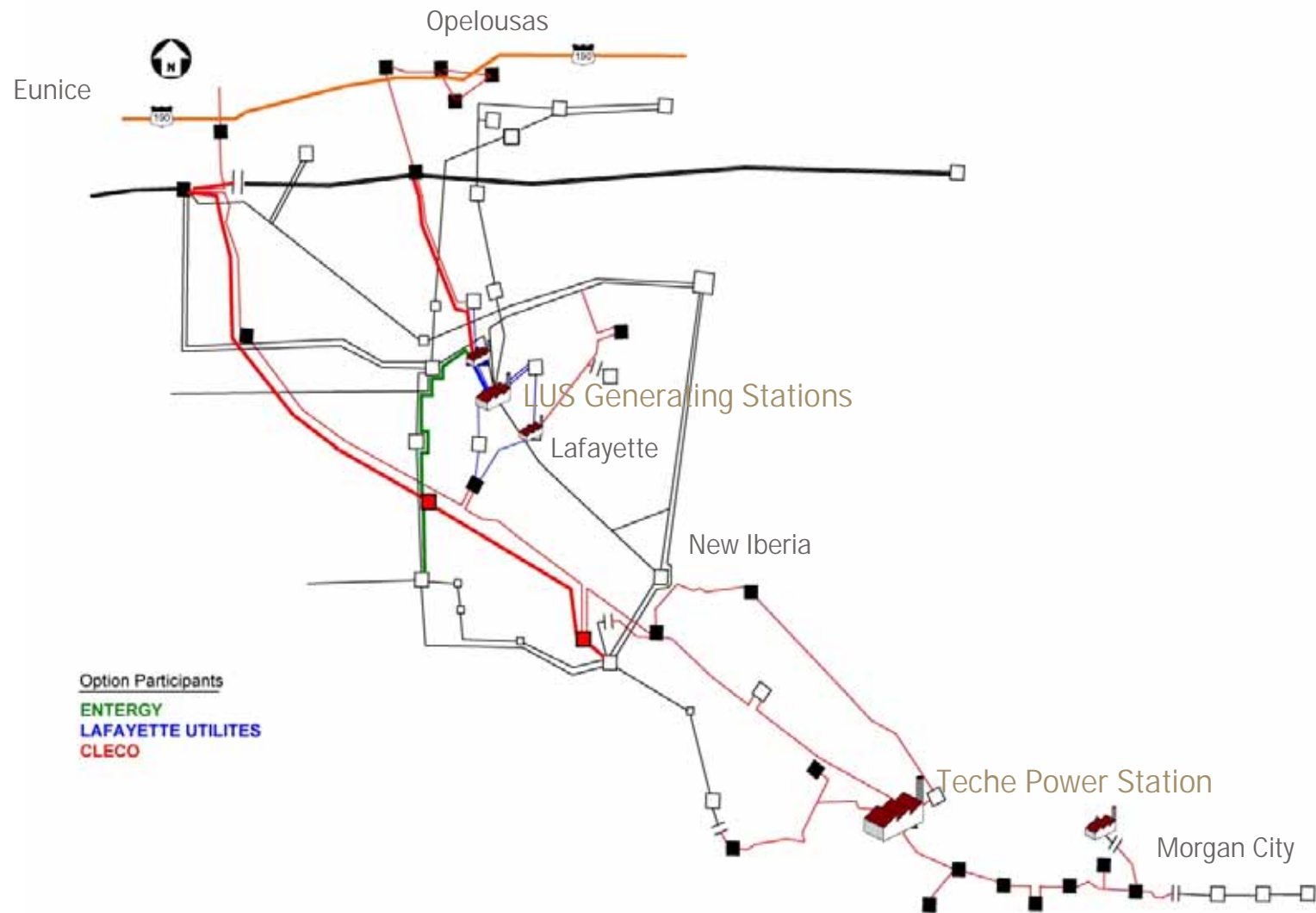
- Area of limited electricity generation, high growth and congested transmission lines
- Geographically situated south of Hwy. 190 to the Gulf of Mexico, west of the Atchafalaya Basin and east of Jennings.
- Power providers in the ALP are interconnected and interdependent.



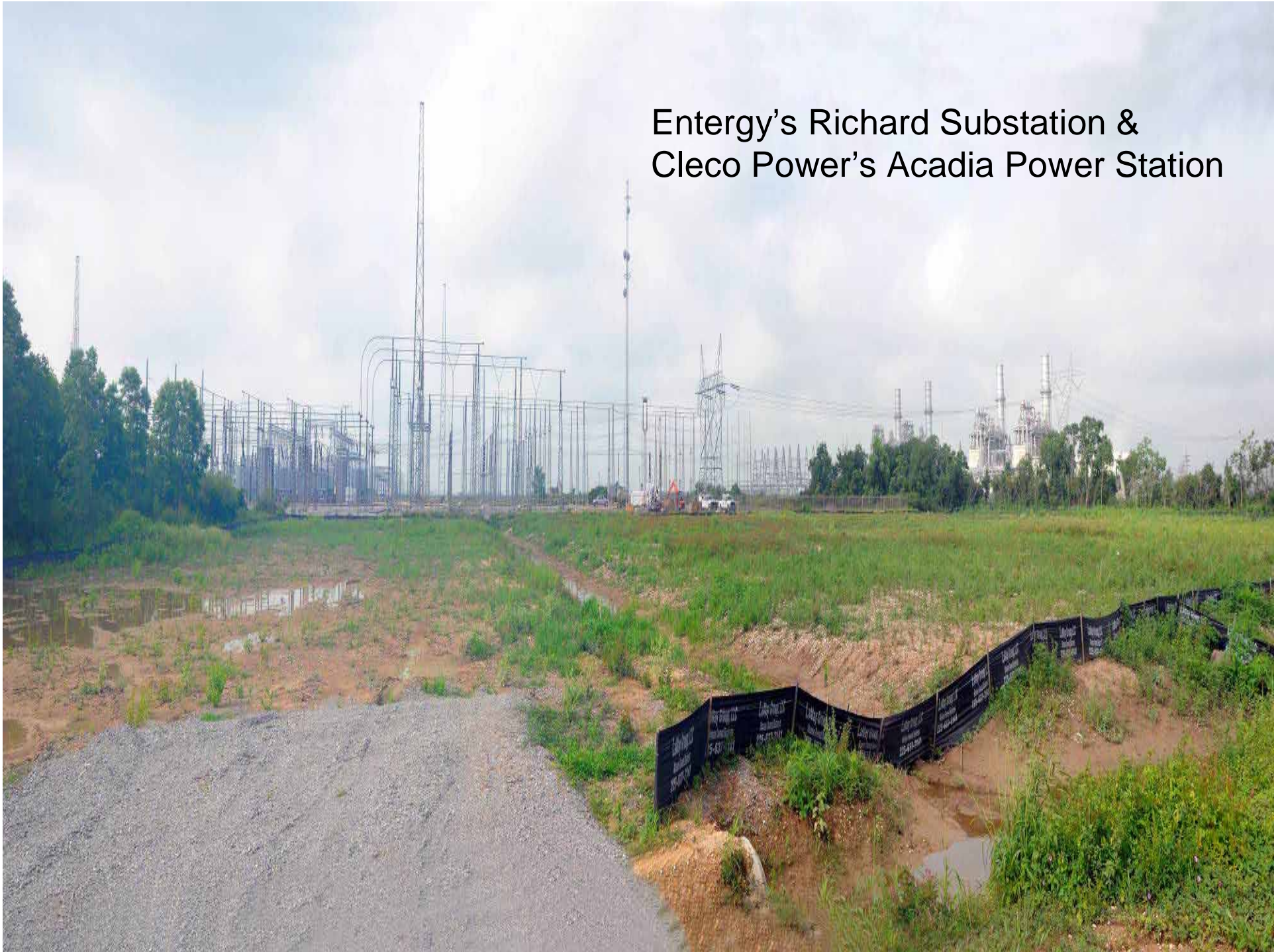
What is the ALP reliability project?

- A \$200 to \$250 million transmission infrastructure improvement project being constructed by Cleco Power, Entergy and LUS.
- It's 90 miles in length
- The expected completion date is 2012
- Project is expected to accommodate growth in the area and help with the flow of power for several years.

Acadiana Load Pocket in 2012



Entergy's Richard Substation & Cleco Power's Acadia Power Station



Dirt work for new substation facilities to tie into
Cleco Power's 230 kV line





Entergy's Steel and Electrical installation to provide power to Cleco's future Rork substation.



Entergy's 500kV IPO breaker
installed at Richard Substation



Entergy's Steel and Electrical installation to provide power to Cleco's future Rork substation.

Substation work at Cleco Power's new Rork Substation adjacent to Richard Substation



Cleco Power's new 230 kV line
coming into Richard Substation
heading east



Cleco Power's new 230 kV line around Richard Substation (continued)



Cleco Power's new 230 kV line around Richard Substation (continued)



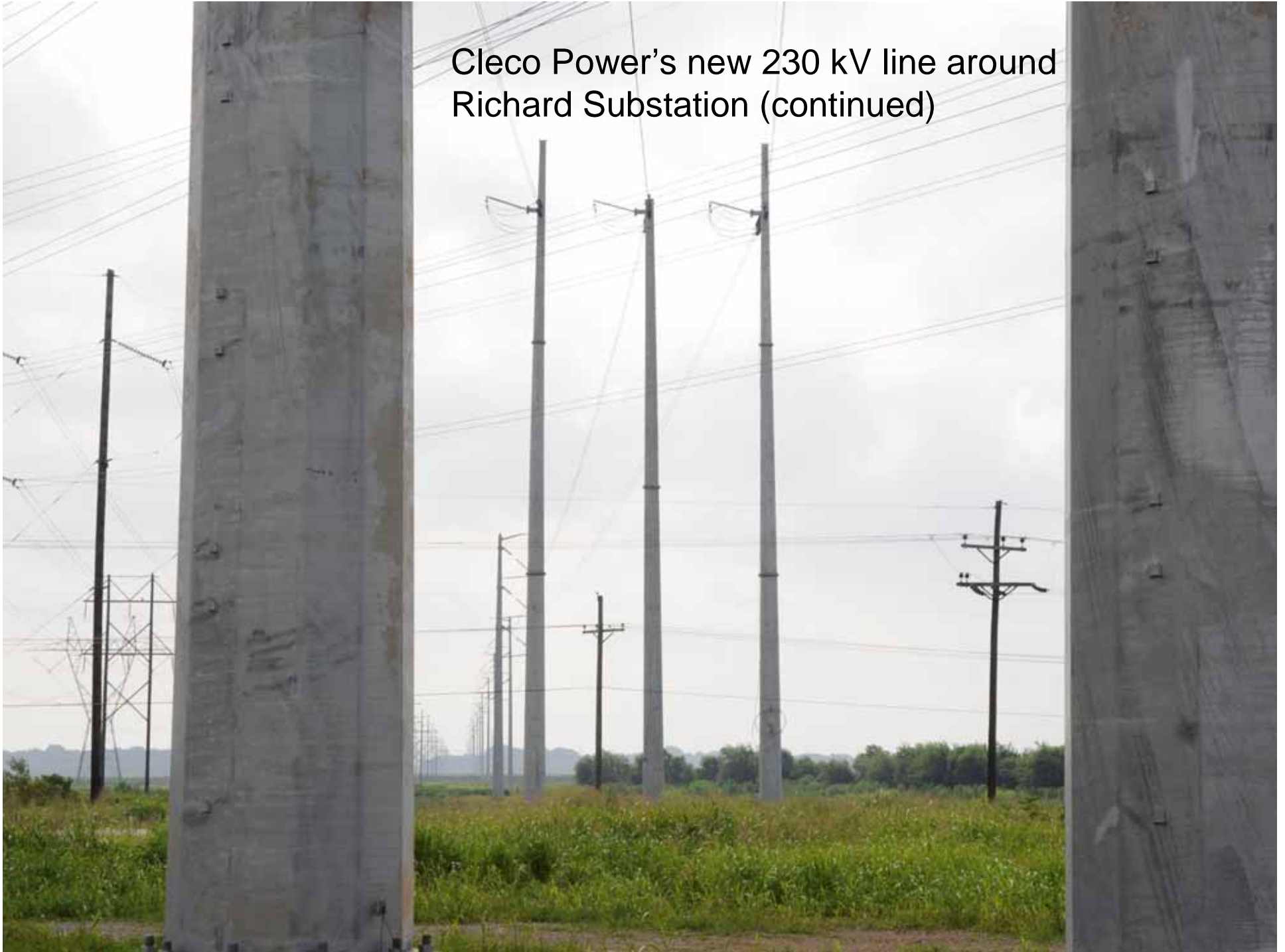
Cleco Power's new 230 kV line around
Richard Substation (continued)





Lance Speer, associate engineer for Cleco Power, points toward the new 230 kV line around Richard Substation.

Cleco Power's new 230 kV line around Richard Substation (continued)



Cleco Power's new 230 kV line
around Richard Substation
(continued)



Steel poles for Cleco Power's new
Rork to Sellers line



Unloading of steel poles for Cleco Power's Rork to Sellers line



Unloading of steel poles for Cleco Power's Rork to Sellers line (continued)



Dirt work for Cleco Power's new Sellers Substation



Vibratory Hammer
installing one of many
30' caissons for new
Meaux to Sellers Road
230kV transmission
line.



Setting of 230kV Dead-End Steel
structure on caisson foundation on
Meaux to Sellers Road
transmission line



Setting of 230kV Dead-End Steel structure on
caisson foundation on Meaux to Sellers Road
transmission line



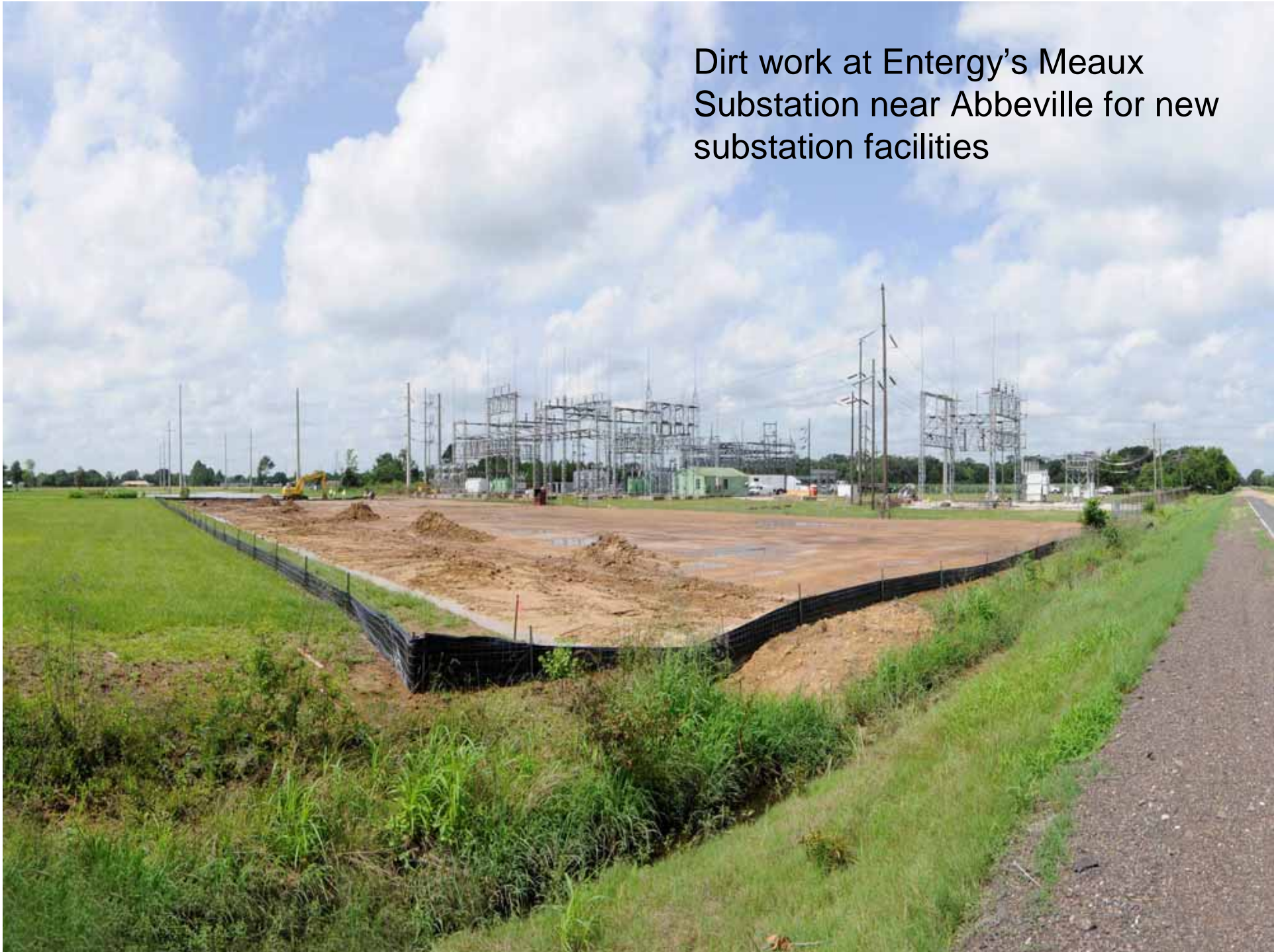


Setting of 230kV Dead-End Steel structure on caisson foundation on Meaux to Sellers Road transmission line

Concrete Poles for Meaux to Sellers Road 230kV
transmission line



Dirt work at Entergy's Meaux
Substation near Abbeville for new
substation facilities



Completed Foundation Work at Entergy Meaux Substation



Cleco Power's new Segura Substation



Cleco Power's new Segura Substation (continued)

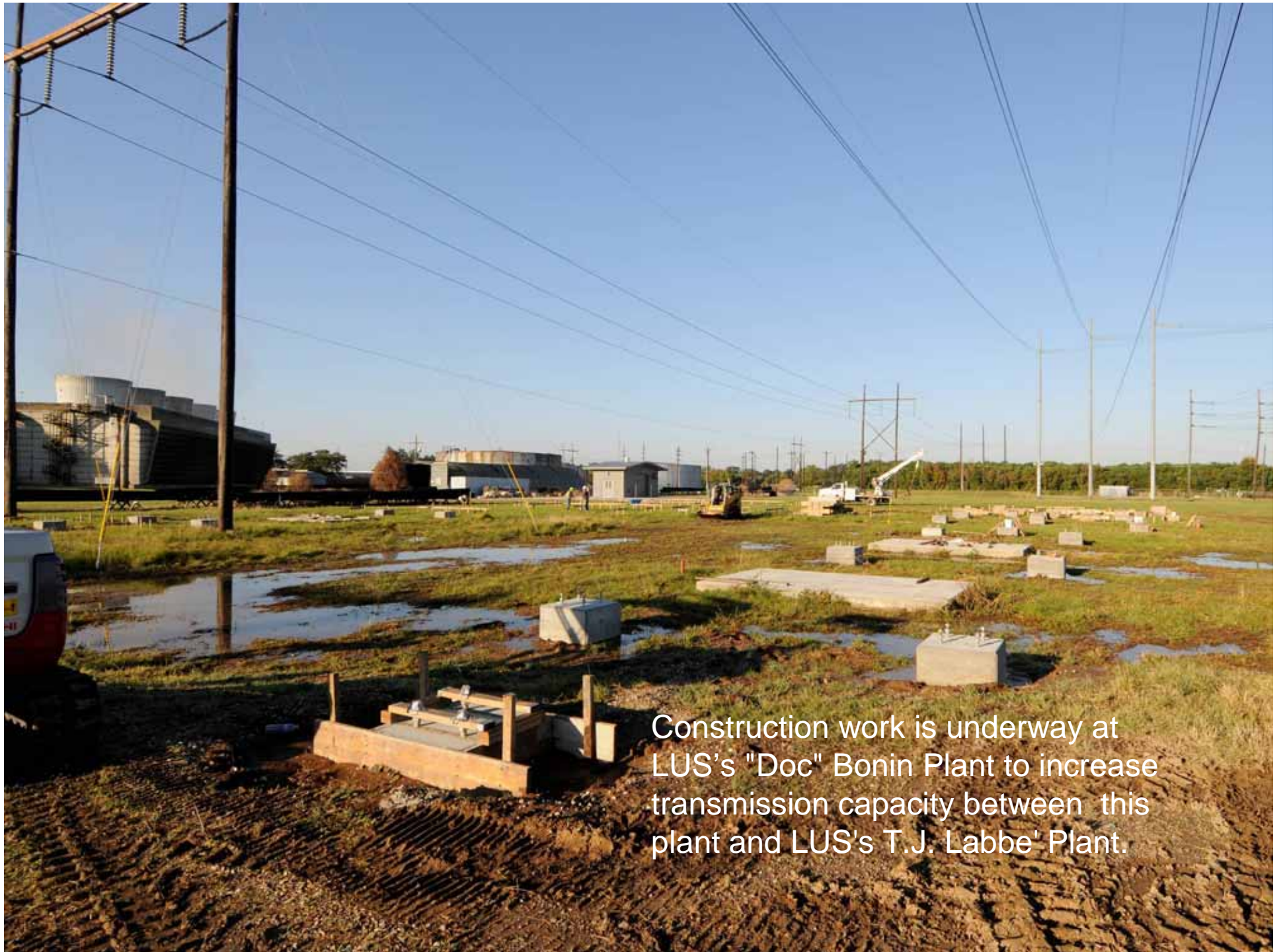


Entergy's Moril Substation and
upgrades for the ALP project



Entergy's Moril Substation and upgrades for the ALP project (continued)





Construction work is underway at LUS's "Doc" Bonin Plant to increase transmission capacity between this plant and LUS's T.J. Labbe' Plant.



The site where a new control building will go up at LUS's "Doc" Bonin Plant.



This A-frame dead end structure at LUS's "Doc" Bonin Plant will be relocated to the final phase of the project.

What's being done to mitigate issues during construction?

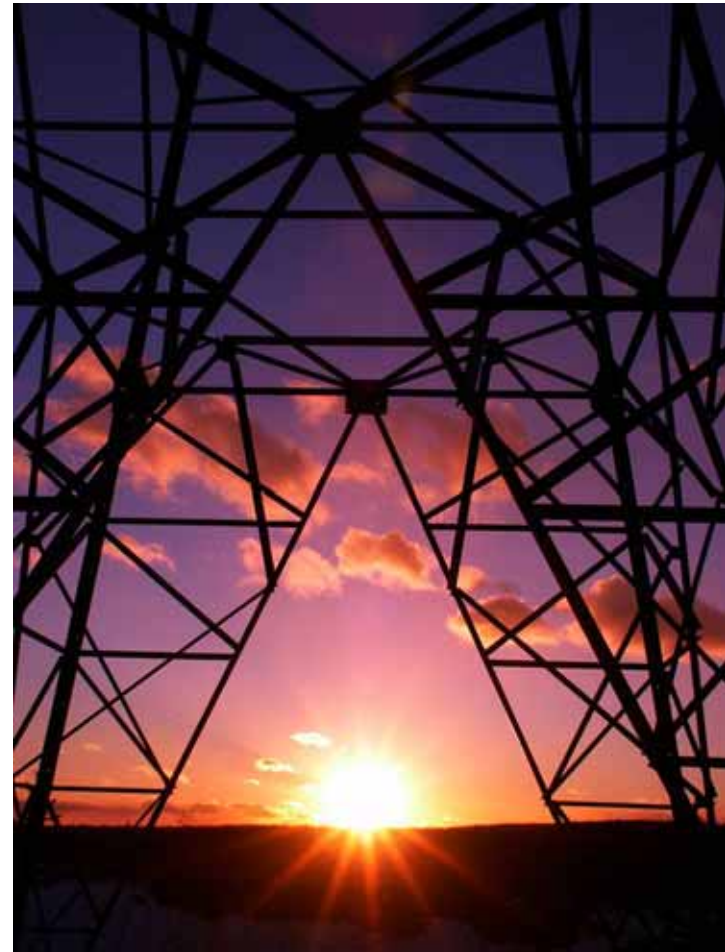
- The electric utilities in the Acadiana area are encouraging customers to conserve electricity this summer.
 - Radio ads
 - Corresponding news releases
 - News interviews
 - Educational programs
- If demand for electricity exceeds available supply, the utilities have a plan in place to work with the local media to inform customers.

Mitigation Plan – Participating electric utilities

- Cleco Power
- Entergy
- Louisiana Energy and Power Authority (LEPA)
 - Abbeville
 - Rayne
 - St. Martinville
 - Welsh
 - Morgan City
 - Houma
 - Kaplan
- Lafayette Utilities Systems (LUS)
- Southwest Louisiana Electric Membership Corporation (SLEMCO)

Status for Summer 2010

- The utilities expect to provide adequate electricity supply to the region for the summer.
- All of the utilities are working together to meet increased demand from higher temperatures.



You can help by conserving when possible



- Raise thermostats to 78 degrees (recommended by the Department of Energy).
- Use fans instead of air conditioners if possible.
- Use major appliances such as dryers, ovens, dishwashers and washing machines in the early morning or late evening hours.
- Close blinds, drapes and curtains during the heat of the day.
- Turn off unnecessary lights and use fluorescent light bulbs if possible.
- Power off computers, TVs and other electronics when not in use.

Questions

A yellow silhouette of the state of Louisiana is positioned in the lower center of the slide. It serves as a background for the text 'Cleco Power, Entergy, LEPA, LUS and SLEMCO'.

**Cleco Power,
Entergy,
LEPA,
LUS and
SLEMCO**

Utilities working together for reliable power