

- 1. EXECUTIVE SUMMARY4**
- 2. SAFETY AWARENESS.....4**
- 3. SCOPE SUMMARY5**
 - I. Overload of Dell-Manilla AECC 161kV Transmission Line for the loss of Plum Point-Shelby 500kV Transmission Line..... 5
- 4. SCOPE DETAILS5**
 - I. Transmission Line 703 5
 - Dell – Manilla (AECC) 161kV line from 148MVA to at least 247 MVA..... 5
 - II. Transmission Substations 5
 - A. Dell EHV Substation..... 5
 - B. Manila (AECC) Substation..... 5
 - III. Detailed Transmission Line Review 5
 - Line 703 Dell - Manila (AECC) 5
 - IV. Detailed Substation Review – Verify Equipment Ratings 6
 - V. Permit Requirements..... 6
 - Line 703 Dell - Manila (AECC) 6
- 5. COSTS7**
- 6. SCHEDULE.....8**
 - I. Project Definition 8
 - II. Transmission lines:..... 8
 - III. Substations:..... 8
- 7. CONFIRMED RESERVATIONS9**
- 8. STUDY QUEUE 12**
- 9. ATTACHMENTS 12**
 - A. Location Drawings..... 12
 - B. One Line Drawings..... 12

Table of Acronyms

ACSR	Aluminum Conductor Steel Reinforced
ACSS	Aluminum Conductor Steel Supported
ADEQ	Arkansas Department of Environmental Quality
AECC	Arkansas Electric Cooperative Corporation
AFUDC	Allowance for Funds Used During Construction
AMRN	Ameren Control Area
ATC	Available Transfer Capability
EES	Entergy Control Area
EHV	Extra-High Voltage
ICT	Independent Coordinator of Transmission
kV	Kilo-Volt
MCM	(M) Thousand Circular Mils
MVA	Mega-Volt Amp
MW	Mega-Watt
NPDES	National Pollution Discharge Elimination System
NOI	Notice of Intent
OASIS	Online Access and Same-time Information System
OATT	Open Access Transmission Tariff
POD	Point of Delivery
POR	Point of Receipt
SOC	System Operations Center
SHPO	Arkansas State Historic Preservation Office
SHV	Super High Voltage
SW	Switch Station
TOC	Transmission Operations Center

1. EXECUTIVE SUMMARY

The purpose of this facility study is to determine the availability of transfer capability across Entergy's transmission system from Entergy (EES) to Ameren (AMRN), to evaluate Southwestern Electric Cooperatives, Inc. request for 78 MW of firm transmission service. The time period for this transfer is from 5/1/2010 until 5/1/2013. The direction of the transaction is EES to ARMN. This study was performed on the latest available 2010 – 2012 summer peak cases, using PSS/E and MUST software by Power Technologies Incorporated (PTI).

Some of the upgrades detailed in this facility study were identified in a higher queued Transmission Service Request. The OASIS numbers, for those requests, are listed with each upgrade. If that prior request is not Confirmed, responsibility for funding this upgrade (in accordance with Entergy's OATT) will be required under this request. If the prior request is Confirmed and the customer enters into a Transmission Service Agreement with Entergy, the responsibility to fund the upgrade will be a requirement under the prior request, however the funding party will have Financial Transmission Rights (FTRs) to any additional capacity created by the upgrade in accordance with Attachment T to Entergy's OATT. Use of any available capacity created as a result of that upgrade will require payment to the funding party for use of those FTRs in accordance with Attachment T.

The facility study identifies any transmission constraints resulting from the requested power transfer. The facility study also includes cost estimates to correct any transmission constraints.

Under Entergy's Independent Coordinator of Transmission which became effective on November 17, 2006, Entergy will recover these costs based on the Attachment T to our OATT. Based on Attachment T, the ICT has determined these costs to be classified as Supplemental Upgrades. The upgrades listed are proposed in Entergy's Construction Plan, yet not in the 2008 ICT Base Plan.

2. SAFETY AWARENESS

Safety is a priority with Entergy. Safety will be designed into substations and lines. The designs will be done with the utmost safety for personnel in mind for construction, operation, and maintenance of the equipment.

Should the work contained within this Facility Study be approved, a detailed Safety Plan will be formulated and incorporated within the project plan.

All employees working directly or indirectly for Entergy shall adhere to all rules and regulations outlined within the Entergy Safety manual. Entergy requires safety to be the highest priority for all projects. All Entergy and Contract employees must follow all applicable safe work procedures.

3. SCOPE SUMMARY

The Facilities Study has identified some transmission constraints. The constraints can be addressed in the following manner:

I. **Overload of Dell-Manilla AECC 161kV Transmission Line for the loss of Plum Point-Shelby 500kV Transmission Line.**

The Dell-Manilla (AECC) 161kV transmission line will overload for the loss of Plum Point-Shelby 500kV transmission line. It is required that the Dell-Manilla (AECC) 161kV transmission line be upgraded from a capacity of 148 MVA to a capacity of 151 MVA or greater.

The upgrade of the Dell-Manilla (AECC) 161kV transmission line has been included in a previous confirmed facility study (OASIS request number 1406786 and 1408199).

A Transmission Service Agreement has been requested for service identified by OASIS 1406786 & 1408199. However that agreement has not yet been accepted by FERC. Therefore detailed scopes will be developed for the upgrades to be completed by Entergy Arkansas, Inc. The line capacity identified in the previous studies was 247 MVA and this will be the line rating used in this facility study.

4. SCOPE DETAILS

Required Transmission Line Upgrades

The solution set outlined in Section 3 is listed below. To insure equipment ratings are adequate for the line upgrades, a review of the substation at each end of the line has been added to the scope.

I. **Transmission Line 703**

Dell – Manilla (AECC) 161kV line from 148MVA to at least 247 MVA

II. **Transmission Substations**

A. ***Dell EHV Substation***

B. ***Manila (AECC) Substation***

III. **Detailed Transmission Line Review**

Line 703 Dell - Manila (AECC)

The scope assumes the rebuilds will be completed in the existing ROW. Additional guy easements may or may not be required based on the result of final design. The proposed structure type will be a mixture of Entergy standard 161kv Steel, and concrete H-frames, single poles. The new conductor will be single 666 MCM ACSR (Flamingo) for the entire length of

each line. The ruling span of 600 feet is the basis of this scope, and estimate. Vibratory caissons and direct burial are assumed for the foundations. This will be determined in the design phase when soil borings and generated structure loads have been completed based on design.

Equipment Required

- 666 MCM ACSR conductor (12.98 circuit miles)
- Replace 104 poles with concrete structures (H-Frame, single, or 3-pole)
- Replace 10 poles with steel structures (H-Frame, single, or 3-pole)
- 10 caissons for wet area
- 90,500 feet of 7#7 shield wire
- 90,500 feet of fiber optic shield wire
- 403 insulator assemblies
- Install wind dampeners

Long Lead Material:

Quantity	Material Description	*Lead Time (weeks)
194,252 lbs	666 MCM ACSR Cable	20-22
90,500 ft	Fiber optic shield wire	12-16
90,500 ft	7#7 Shield wire	13-17
10	Steel Poles	16-24
10	Caissons	16-18
403	Insulator assemblies	10-12

Lead time as of Oct 2007

IV. Detailed Substation Review – Verify Equipment Ratings

Dell Substation – verify equipment ratings (887A required)

Line switch B5422 is rated at 1600 A and the bus is rated at least 1600 A. No upgrades will be required. Relay settings will be updated for new conductor.

Manilla (AECC) Substation – verify equipment ratings (887A required)

Line switches B1673 & B1622 are rated at 1600 A. The owner has advised the bus is rated for 1224 A. No upgrades will be required.

V. Permit Requirements

Line 703 Dell - Manila (AECC)

Highway Crossing Permits

Highway	Structure Location
AR State #77	#51- #52
AR State #18	#79 - #80
AR State #18	#116 - #117

Review / Update Existing Easement

Activity	Structure Location
Remove Trees	#51 - #53
Add / Relocate Guy	#52

Levee District Permit

Permits are required for crossing the drainage district levee crossing.

Public Service Commission Filing

A river crossing filing will be required for crossing Big Lake.

Environmental

A Section 10 permit from the Corps of Engineers will likely be required for span over Big Lake. (Navigable Waters)

Section 404 Nation Wide Corps of Engineer Permit

State Historical Preservation Office review.

Wetland permits may be required depending upon support structure foundation foot-print. (Wetland Delineation)

A formal submittal of the NOI and SWPPP to ADEQ. (NPDES Permit).

Arkansas State Game & Fish Commission review.

Federal Wildlife Commission review.

5. COSTS

The ICT has reviewed and determined that the required upgrade will be considered a Supplemental Upgrade. For more information on cost responsibility for Base Plan and Supplemental Upgrades, see Attachment T to Entergy's OATT. The costs shown in the table include overheads and AFUDC, but do not include tax gross up. The estimated tax gross-up rate of 32.693% may apply to the project.

Projected Costs

Description	Estimated Completion Year	Total Cost 2007	Base Case	Supplemental Upgrades
Dell – Manilla (AECC)	2010	\$9,679,000		\$9,679,000
Dell Substation	2010	\$16,000		\$16,000
Manilla AECC Substation		\$0		\$0
Total with OH excluding TGU		\$9,695,000		\$9,695,000

6. SCHEDULE

A detailed schedule will be prepared subsequent to customer approval. The line upgrades are dependent on obtaining outages for the line work. If outages cannot be obtained or must be sequenced due to seasonal requirements, additional time will be required to complete the upgrades. The following are rough durations

- I. Project Definition**
Includes surveys, soil borings, and Project Execution Plan 30 Weeks
- II. Transmission lines:**
Includes design, material procurement, and construction
 - Dell – Manila (AECC) 60 weeks
- III. Substations:**
Includes design & relay review (Completed after line upgrade)
 - Dell Substation 10 weeks

Notes to Duration Schedules:

- All construction work requiring outages will be performed during off-peak load season. Line outages will be discussed with the SOC and TOC and the assumption is made that line outages will be executed as planned. However, last minute denial of outages by the SOC/TOC along with resulting schedule delay is possible.
- Substation construction will be completed during transmission line outages.
- Transmission Line and Substation projects will begin subsequent to Definition phase Project Execution Plan
- Schedule durations are high level estimates at this time. Upon project approval, a detailed schedule will be produced.

7. CONFIRMED RESERVATIONS

OASIS #		PSE	MW	Begin	End
140912		NRG Power Marketing	103	01/01/98	01/01/08
250778	(delisting)	Entergy Services, Inc. (EMO)	1	07/02/98	07/01/11
392740		Ameren Energy Inc.	165	04/12/99	01/01/09
569011		Entergy Services, Inc. (EMO)	242	03/01/00	01/01/14
731017		South Mississippi Electric Power Assoc.	75	01/01/01	06/01/09
759196		Entergy Services (EMO)	143	01/01/01	01/01/21
759294		East Texas Electric Cooperative	31	01/01/01	01/01/18
810207	(renewal)	South Mississippi Electric Power Assoc.	300	01/01/02	01/01/20
810234	(renewal)	South Mississippi Electric Power Assoc.	300	01/01/02	01/01/20
850239		Municipal Energy Agency of Mississippi	19	05/01/01	01/01/10
850304		Municipal Energy Agency of Mississippi	13	05/01/01	06/01/10
851493		Municipal Energy Agency of Mississippi	13	05/01/01	06/01/10
1019492	(renewal)	South Mississippi Electric Power Assoc.	51	01/01/02	01/01/18
1024194		City Water & Light, Jonesboro	83	01/01/03	01/01/10
1024198		City Water & Light, Jonesboro	168	01/01/03	01/01/10
1035455		South Mississippi Electric Power Assoc.	280	01/01/03	01/01/08
1084342		East Texas Electric Cooperative	50	01/01/05	01/01/09
1084344		East Texas Electric Cooperative	50	01/01/05	01/01/09
1084345		East Texas Electric Cooperative	75	01/01/05	01/01/09
1096986		Tennessee Valley Auth BPT	73	09/01/03	09/01/13
1099991		City Water & Light, Jonesboro	83	01/01/10	01/01/16
1099997		City Water & Light, Jonesboro	168	01/01/10	01/01/16
1105665		Entergy Services, Inc. (EMO)	185	02/01/03	02/01/16
1105666		Entergy Services, Inc. (EMO)	91	02/01/03	02/01/27
1105668		Entergy Services, Inc. (EMO)	206	02/01/03	02/01/27
1126821		Entergy Services, Inc. (EMO)	101	05/01/04	05/01/29
1139973		South Mississippi Electric Power Assoc.	95	05/01/03	12/30/28
1139975		South Mississippi Electric Power Assoc.	95	05/01/04	12/31/29
1139977		South Mississippi Electric Power Assoc.	95	05/01/05	12/31/29
1139982		South Mississippi Electric Power Assoc.	130	01/01/03	01/01/20
1151106		Entergy Services, Inc. (EMO)	20	06/01/10	06/01/29
1161925		CLECO Power LLC (Gen)	12	08/01/03	01/01/10
1161927		CLECO Power LLC (Gen)	7	08/01/03	01/01/10
1161928		CLECO Power LLC (Gen)	7	08/01/03	01/01/10
1168061		Entergy Services, Inc. (EMO)	80	08/01/04	02/01/28
1168408		Entergy Services, Inc. (EMO)	247	08/01/04	02/01/28
1202470		NRG Power Marketing	91	04/01/04	04/01/09
1286481		Merrill Lynch Commodities	11	01/01/00	01/01/10
1289686	(delisting)	Entergy Services Inc. (EMO)	1	06/01/07	06/01/30
1294132		Entergy Services, Inc. (EMO)	526	01/01/06	01/01/35
1309874	(renewal)	East Texas Electric Cooperative	75	01/01/09	01/01/17
1309875	(renewal)	East Texas Electric Cooperative	50	01/01/09	01/01/17
1309876	(renewal)	East Texas Electric Cooperative	50	01/01/09	01/01/17
1310448	(1284799) (delisting)	Entergy Services Inc. (EMO)	1	06/01/07	06/01/30
1328125		CLECO Power Marketing	35	01/01/06	01/01/11
1340017		Plum Point Energy Associates	40	03/01/10	03/01/40
1340019		Plum Point Energy Associates	35	03/01/10	03/01/40
1340028		Plum Point Energy Associates	50	03/01/10	03/01/30
1340029		Plum Point Energy Associates	50	03/01/10	03/01/30
1340665		Entergy Services, Inc. (EMO)	200	01/01/06	01/01/09
1340673		Entergy Services, Inc. (EMO)	50	06/01/07	06/01/08
1346435		Entergy Services, Inc. (EMO)	100	06/01/07	06/01/08

OASIS #		PSE	MW	Begin	End
1346437		Entergy Services, Inc. (EMO)	100	06/01/08	06/01/09
1346440		Entergy Services, Inc. (EMO)	200	06/01/07	06/01/08
1346444		Entergy Services, Inc. (EMO)	179	02/01/07	02/01/08
1348508		CLECO Power Marketing	10	01/01/06	01/01/10
1352704	(1340032)	Plum Point Energy Associates	5	03/01/10	03/01/40
1356328		Municipal Energy Agency of Mississippi	40	06/01/10	06/01/40
1372645		Morgan Stanley Commodities Group	102	01/01/07	01/01/08
1372646		Morgan Stanley Commodities Group	102	01/01/07	01/01/08
1373643		City of Conway	25	03/01/10	03/01/40
1375299		Louisiana Generating LLC	11	03/01/06	03/01/11
1375300		Louisiana Generating LLC	8	03/01/06	03/01/11
1375301		Louisiana Generating LLC	5	03/01/06	03/01/11
1375559		CLECO Power LLC	675	12/01/06	12/01/16
1380484		Osceola Light & Power	9	09/01/09	09/01/39
1381398		Constellation Energy Group	34	01/01/06	01/01/36
1381400		Constellation Energy Group	34	01/01/06	01/01/36
1381404		Constellation Energy Group	17	01/01/06	01/01/36
1381406	(1325187)	Constellation Energy Group	17	01/01/06	01/01/36
1383852		AECC	550	01/01/07	01/01/17
1385835	(1363730)	City of Prescott	22	04/01/06	04/01/09
1387272		CLECO Power	11	04/01/06	04/01/16
1387275		CLECO Power	16	04/01/07	04/01/08
1389008		NRG Power Marketing	270	06/01/07	06/01/08
1389848		Louisiana Energy & Power Authority	6	02/01/07	02/01/08
1401985		Constellation Commodities Group	42	08/01/06	08/01/36
1403756		Constellation Commodities Group	100	01/01/07	01/01/08
1403757		Constellation Commodities Group	100	01/01/07	01/01/08
1406786		South Mississippi Electric Power Assoc.	100	04/01/10	04/01/40
1407894		Morgan Stanley Commodities Group	102	01/01/08	01/01/09
1407895		Morgan Stanley Commodities Group	102	01/01/08	01/01/09
1408199		South Mississippi Electric Power Assoc.	100	04/01/10	04/01/40
1408981		NRG Power Marketing	92	01/01/07	01/01/10
1410022	(1340037)	City of North Little Rock	60	03/01/10	03/01/40
1412068		NRG Power Marketing	103	01/01/07	01/01/08
1413110		NRG Power Marketing	100	01/01/07	01/01/09
1414925		Constellation Commodities Group	22	01/01/07	01/01/08
1414927		Constellation Commodities Group	50	01/01/07	01/01/08
1416650		NRG Power Marketing	100	01/01/07	01/01/08
1422496		Constellation Commodities Group	57	01/01/07	01/01/08
1425495		East Texas Electric Cooperative	50	03/01/10	03/01/45
1431621		South Mississippi Electric Power Assn.	200	01/01/07	01/01/08
1443976	(1424383)	Constellation Commodities Group	9	01/01/07	01/01/08
1435972		Entergy Services, Inc. (EMO)	150	05/01/07	05/01/10
1435973		Entergy Services, Inc. (EMO)	135	05/01/08	05/01/10
1436590		MidAmerican Energy	50	01/01/07	01/01/08
1436591		MidAmerican Energy	50	01/01/07	01/01/08
1436592		MidAmerican Energy	50	01/01/07	01/01/08
1436593		MidAmerican Energy	50	01/01/07	01/01/08
1440358		NRG Power Marketing	100	03/01/07	03/01/08
1442295		NRG Power Marketing	3	07/01/07	07/01/09
1442453		NRG Power Marketing	320	06/01/07	06/01/26
1448054		NRG Power Marketing	103	01/01/08	01/01/09
1448057		NRG Power Marketing	103	01/01/08	01/01/09
1449494		Entergy Services, Inc. (EMO)	154	06/01/07	06/01/09

OASIS #		PSE	MW	Begin	End
1449495		Entergy Services, Inc. (EMO)	322	06/01/09	06/01/59
1449881		Cargill Power	103	01/01/08	01/01/09
1452308		NRG Power Marketing	100	01/01/08	01/01/09
1452603		NRG Power Marketing	100	09/01/07	09/01/08
1453402		NRG Power Marketing	103	01/01/09	01/01/10
1456636		CLECO Power LLC	10	10/01/07	10/01/12
1464028		East Texas Electric Coop	168	01/01/10	01/01/40
1466197		NRG Power Marketing	206	01/01/09	01/01/10
1466561		Constellation Energy	50	01/01/08	01/01/09
1466562		Constellation Energy	25	01/01/08	01/01/09
1470811		East Texas Electric Coop	186	01/01/10	01/01/40
1477069		Entergy Services	10	11/01/07	11/01/37
1477256		NRG Power Marketing	103	01/01/08	01/01/09
1479051		Ameren Energy Mktg	103	07/01/08	07/01/09
1485805		NRG Power Marketing	103	07/01/08	07/01/09
1494443		Constellation Energy	35	01/01/08	01/01/09
1494445		Constellation Energy	75	01/01/08	01/01/09
1494446		Constellation Energy	75	01/01/08	01/01/09
1494450		Constellation Energy	25	01/01/08	01/01/09

Pre-888 Transactions

OASIS #		PSE	MW	Begin	End
1332606		East Texas Electric Cooperative	55	01/01/06	01/01/17
1412155		Entergy Services, Inc. (EMO)	1718	01/01/07	01/01/38
1412156		Entergy Services, Inc. (EMO)	741	01/01/07	01/01/38
1412158		Entergy Services, Inc. (EMO)	1867	01/01/07	01/01/38
1412160		Entergy Services, Inc. (EMO)	1142	01/01/07	01/01/38
1412161		Entergy Services, Inc. (EMO)	59	01/01/07	01/01/38
1412162		Entergy Services, Inc. (EMO)	148	01/01/07	01/01/38
1412163		Entergy Services, Inc. (EMO)	194	01/01/07	01/01/38
1412164		Entergy Services, Inc. (EMO)	1157	01/01/07	01/01/38
1412165		Entergy Services, Inc. (EMO)	1219	01/01/07	01/01/38
1412166		Entergy Services, Inc. (EMO)	683	01/01/07	01/01/38
1412167		Entergy Services, Inc. (EMO)	140	01/01/07	01/01/38
1412168		Entergy Services, Inc. (EMO)	456	01/01/07	01/01/38
1412169		Entergy Services, Inc. (EMO)	739	01/01/07	01/01/38
1412170		Entergy Services, Inc. (EMO)	183	01/01/07	01/01/38
1412171		Entergy Services, Inc. (EMO)	64	01/01/07	01/01/38
1412172		Entergy Services, Inc. (EMO)	870	01/01/07	01/01/38
1412173		Entergy Services, Inc. (EMO)	129	01/01/07	01/01/38
1412174		Entergy Services, Inc. (EMO)	140	01/01/07	01/01/38
1412175		Entergy Services, Inc. (EMO)	130	01/01/07	01/01/38
1412176		Entergy Services, Inc. (EMO)	65	01/01/07	01/01/38
1412177		Entergy Services, Inc. (EMO)	947	01/01/07	01/01/38
1412178		Entergy Services, Inc. (EMO)	61	01/01/07	01/01/38
1412179		Entergy Services, Inc. (EMO)	304	01/01/07	01/01/38
1412180		Entergy Services, Inc. (EMO)	351	01/01/07	01/01/38
1412181		Entergy Services, Inc. (EMO)	692	01/01/07	01/01/38
1412182		Entergy Services, Inc. (EMO)	1641	01/01/07	01/01/38
1412183		Entergy Services, Inc. (EMO)	433	01/01/07	01/01/38

OASIS #	PSE	MW	Begin	End
1412184	Entergy Services, Inc. (EMO)	1926	01/01/07	01/01/38
1412185	Entergy Services, Inc. (EMO)	946	01/01/07	01/01/38
1412186	Entergy Services, Inc. (EMO)	1233	01/01/07	01/01/38

8. STUDY QUEUE

OASIS #	PSE	MW	Begin	End
1338840	Louisiana Energy & Power Authority	150	09/01/05	09/01/10
1338849	Louisiana Energy & Power Authority	45	09/01/05	09/01/10
1384737	Louisiana Energy & Power Authority	13	09/01/05	09/01/10
1460876	Aquila Networks – MPS	75	03/01/09	03/01/29
1460878	Aquila Networks – MPS	75	03/01/09	03/01/29
1460879	Aquila Networks – MPS	75	03/01/09	03/01/29
1460881	Aquila Networks – MPS	75	03/01/09	03/01/29
1460900	Louisiana Energy & Power Auth	116	01/01/09	01/01/30
1468113	Muni energy Agcy of Miss	20	06/01/11	06/01/41
1468285	Mid American Energy	103	09/01/07	09/01/08
1468286	Mid American Energy	103	09/01/07	09/01/08
1468288	Mid American Energy	103	01/01/08	01/01/09
1468289	Mid American Energy	103	01/01/08	01/01/09
1470484	City of W. Memphis	20	01/01/11	01/01/41
1478781	Entergy Services	804	01/01/08	01/01/58
1481059	Constellation Energy	60	02/01/11	02/01/30
1481111	City of Conway	50	02/01/11	02/01/46
1481119	Constellation Energy	30	02/01/11	02/01/30
1481235	Louisiana Energy and Power Authority	50	02/01/11	02/01/16
1481438	NRG Power Marketing	20	02/01/11	02/01/21
1483241	NRG Power Marketing	103	01/01/10	01/01/20
1483243	NRG Power Marketing	206	01/01/10	01/01/20
1483244	NRG Power Marketing	309	01/01/10	01/01/20
1483247	NRG Power Marketing	515	01/01/10	01/01/20
1483485	Entergy Services (EMO)	100	01/01/08	01/01/11
1483490	Entergy Services (EMO)	1	01/01/08	01/01/11
1487880	NRG Power Marketing	300	01/01/08	01/01/10

9. ATTACHMENTS

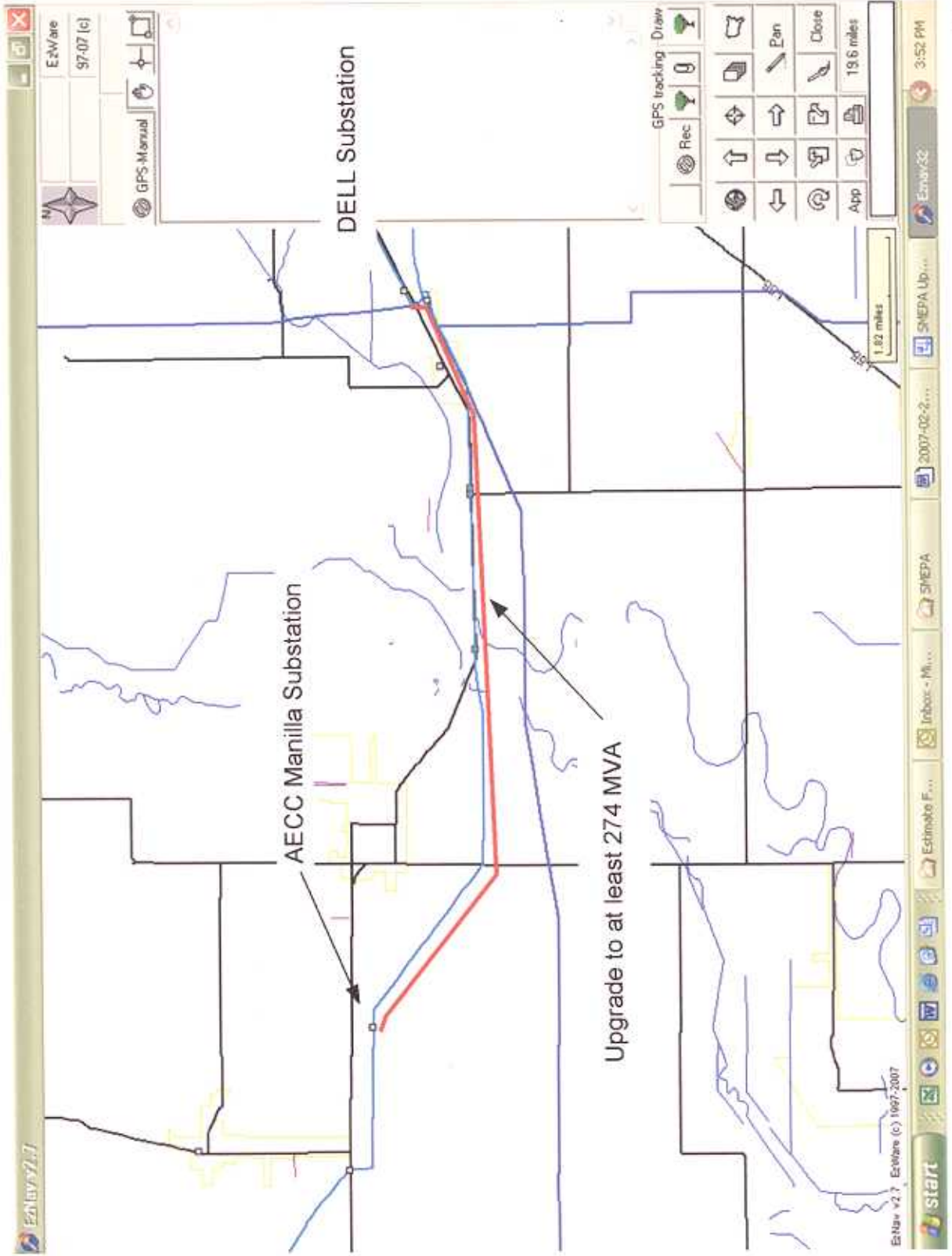
A. Location Drawings

Description	Page
Dell – Manila Area	A-1

B. One Line Drawings

Description	Page
Dell Substation	A2010SO2
Manila (AECC) Substation Tap	AC148SO1

Southwestern Electric Cooperatives Upgrade
Dell – Manilla (AECC)
Line 703





500KV CONTROL HOUSE

161KV CONTROL HOUSE

No Upgrades Required
Relay Coordination to be Reviewed

BLYTHEVILLE ELM ST. NO. 1
OCB #B66BD, #B667D
AECC DELL EAST
SW. #B3922

CONT'D FROM
DWG. A201DS01
XFMR #2

BLYTHEVILLE ELM ST. NO. 2
OCB #B6620, #B6630

NUCOR-YAMOTO
NO. 1 161KV LINE

NUCOR-YAMOTO
NO. 2 161KV LINE

CONT'D FROM
DWG. A201DS01
XFMR #1

CONT'D FROM
DWG. A201DS01
AT SW# BB302

ENERGY
AECC

SOUTH BUS

AECC MANILA
SW. #B1622
PARAGQUILD
OCB #B7340
OCB #B7350

OSCEOLA NORTH
SW. #B3622
OSCEOLA
OCB #B4522

DELL AECC 161KV SWITCHING STATION

B4262

B4272

B4282

500KV

161KV

B2209
3000A

B5422
1800A

B2214
2000A

B2206
2000A

B2204
2000A

B2215

B2224
2000A

B2226
2000A

B2202
3000A

B2229
2000A

B2231
2000A

B2234
2000A

B2235

B2239
2000A

B2241
2000A

B2299
2000A

B2275

B4222
1600A

B6722
2000A

B4234
2000A

B4244
2000A

B4216
2000A

B4206
2000A

B4207
2000A

B4204
2000A

B4215

B4289
2000A

B4214
2000A

NO.	DATE:	REVISION	BY:	CHK:	APPR:
4	05-18-05	ADDED AUTO TRANSFORMER - DEAG T50083	JPA	PW	MP
3	7-17-03	ADDED 2000A L. TRAP & CHANGED OSCEOLA LINE DES.	RAM		
2	3-24-03	UPDATED LINE DESTINATION	RMB	RJM	MP
1	10-29-96	CORRECTED BLYTHEVILLE ELM GCB #B6620 & B6630	KAD		

ENERGY ARKANSAS, INC.

DELL 500/161KV SUB
STATION ONLINE
IN-SERVICE

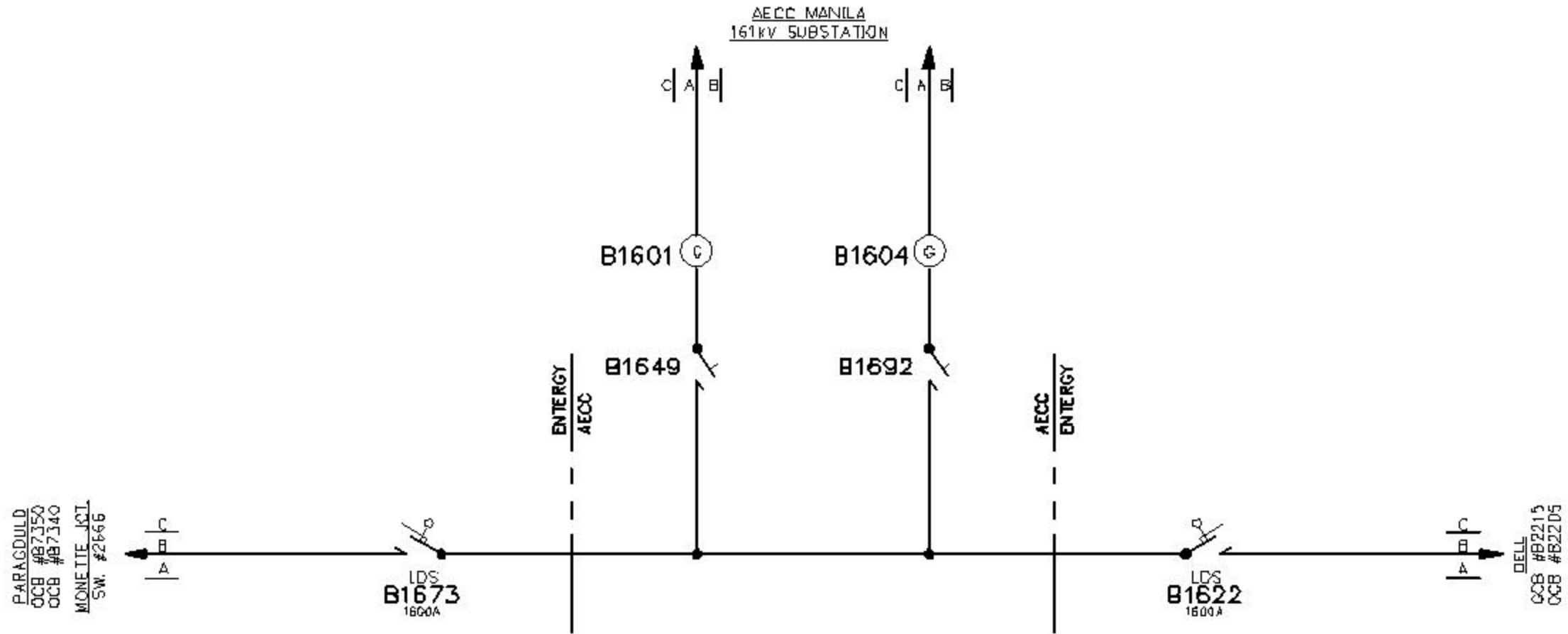
FRANCHISE: NORTHERN SCALE: NONE

No. **A2010S02**

PLOT 1=1 SH. 2 OF 2

Journal 6/22/2005

REPLACES A201001



No Upgrades Required

8/21/2007

ENTERGY ARKANSAS, INC.			
AECC MANILA 161KV SW STA			
STATION ONLINE IN-SERVICE			
FRANCHISE:	NORTHERN	SCALE:	NONE
No. AC148S01		PLOT 1=1 SH. 1 OF 1	

07-23-07	ADDED 2ND AECC MANILA LINE POSITION	TWF	MH	DN/MP
DATE:	REVISION	BY:	CHK:	APPR: