

Community Solar Project Interconnection  
**Community Solar Project Facilities Study Report**

Completed for

**(“Applicant”)  
OCS024**

Proposed Point of Interconnection  
**Circuit 5W857 out of McKay substation at 12.5 kV  
(At approximately 45°37’55.08”N, 118°41’7.41”W)**

**October 28, 2020**

---

## TABLE OF CONTENTS

1.0	Description of the Project .....	1
2.0	Approval Criteria for Tier 4 Interconnection Review.....	1
3.0	Scope of the Study .....	1
4.0	Proposed Point of Interconnection.....	1
5.0	Study Assumptions .....	2
6.0	Requirements .....	3
6.1	Community Solar Project Modifications.....	3
6.1.1	APPLICANT TO BE RESPONSIBLE FOR .....	3
6.1.2	PUBLIC UTILITY TO BE RESPONSIBLE FOR .....	4
6.2	Point of Interconnection .....	5
6.2.1	PUBLIC UTILITY TO BE RESPONSIBLE FOR .....	5
6.3	Other.....	5
6.3.1	PUBLIC UTILITY TO BE RESPONSIBLE FOR .....	5
7.0	Cost Estimate .....	6
8.0	Schedule.....	6
9.0	Participation by Affected Systems.....	8
10.0	Appendices.....	8
10.1	Appendix A: Higher Priority Requests.....	9
10.2	Appendix B: Property Requirements.....	10

## **1.0 DESCRIPTION OF THE PROJECT**

(“Applicant”) proposed interconnecting 1.56 MW of new generation to PacifiCorp’s (“Public Utility”) Circuit 5W857 out of McKay substation located in Umatilla County, Oregon. The project (“Project”) will consist of twenty-six (26) Sungrow SG60KU-M 60 kW inverters for a total nameplate output of 1.56 MW. The requested commercial operation date is December 31, 2021.

The Public Utility has assigned the Project “OCS024.”

## **2.0 APPROVAL CRITERIA FOR TIER 4 INTERCONNECTION REVIEW**

Pursuant to Public Utility Commission of Oregon Order 19-392 approved Community Solar Project procedures, a Public Utility must use the Tier 4 review procedures for an application to interconnect a Community Solar Project that meets the following requirements:

- (a) The Community Solar Project does not qualify for or failed to meet Tier 2 interconnection review requirements; and
- (b) The Community Solar Project must have a nameplate capacity of three (3) megawatts or less.

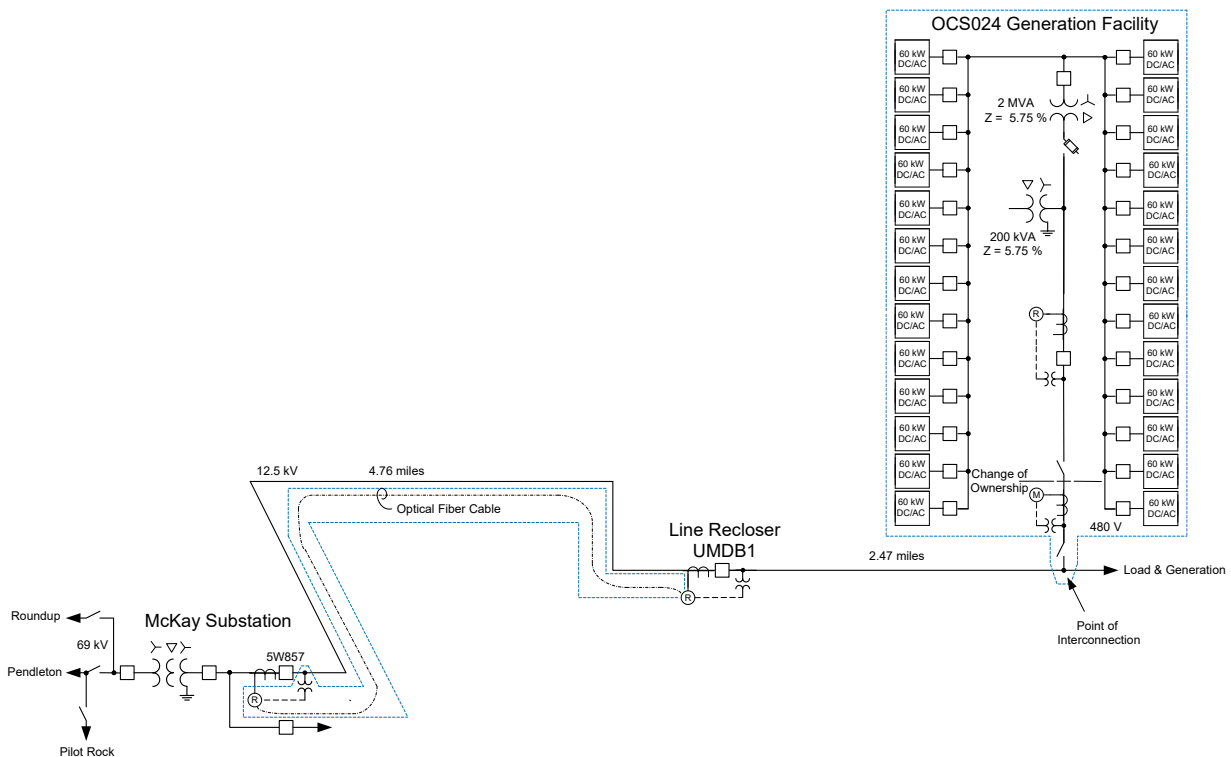
## **3.0 SCOPE OF THE STUDY**

Pursuant to Public Utility Commission of Oregon Order 19-392 approved Community Solar Project procedures the Facilities Study Report shall consist of:

- (a) A detailed scope identifying the interconnection facilities and system upgrades required to safely interconnect the Community Solar Project including the electrical switching configuration of the equipment, including the transformer, switchgear, meters, and other station equipment as applicable;
- (b) A good-faith, non-binding estimate of the costs for the facilities and upgrades, including equipment, engineering, procurement, and construction costs, and;
- (c) A detailed estimate of the time required to procure, construct, and install the required interconnection facilities and system upgrades.

## **4.0 PROPOSED POINT OF INTERCONNECTION**

The Applicant’s proposed Community Solar Project is to be interconnected to the Public Utility’s distribution circuit 5W857 out of McKay substation via a new primary meter. The Point of Interconnection (“POI”) will be located near 45°37’55.08”N, 118°41’7.41”W long Tutuilla Church Road in Umatilla County, Oregon. Figure 1 below is a one line diagram that that illustrates the interconnection of the proposed generating facility to the Public Utility’s system.



*Figure 1: System One Line Diagram*

## 5.0 STUDY ASSUMPTIONS

- All active higher priority transmission service and/or generator interconnection and Community Solar Project requests will be considered in this study and are listed in Appendix 1. If any of these requests are withdrawn, the Public Utility reserves the right to restudy this request, as the results and conclusions contained within this study could significantly change.
- For study purposes there are two separate queues:
  - Transmission Service Queue: to the extent practical, all System Upgrades that are required to accommodate active transmission service requests will be modeled in this study.
  - Generation Interconnection Queue and Community Solar Queue: all relevant higher queue interconnection requests will be modeled in this study.
- The Applicant's request for interconnection service in and of itself does not convey any other form or service.
- This study assumes the Project will be integrated into Public Utility's system at the agreed upon and/or proposed POI.
- The Applicant will construct and own the facilities required between the POI and the Project unless specifically identified by the Public Utility.
- Line reconductor or fiber underbuild required on existing poles will be assumed to follow the most direct path on the Public Utility's system. If during detailed design the path must be modified it may result in additional cost and timing delays for the Applicant's Project.
- Generator tripping may be required for certain outages.
- All facilities will meet or exceed the minimum Western Electricity Coordinating Council ("WECC"), North American Electric Reliability Corporation ("NERC"), and Public Utility

performance and design standards.

- Higher priority interconnection request Q1045 is requires Bonneville Power Administration (“BPA”) to update settings to relays in its Roundup substation to accommodate reverse power flow. The setting updates are assumed to be complete prior to the commencement of generation activities of the Applicant’s generating facility. If the Applicant chooses to proceed prior to Q1045 the Public Utility will coordinate with BPA to determine if the settings updates must be assigned to the Applicant’s interconnection request.
- This report is based on information available at the time of the study. It is the Applicant’s responsibility to check the Public Utility’s web site regularly for transmission system updates (<https://www.oasis.oati.com/ppw>)

## **6.0 REQUIREMENTS**

### **6.1 COMMUNITY SOLAR PROJECT MODIFICATIONS**

The following outlines the design, procurement, construction, installation, and ownership of equipment at the Applicant’s Community Solar Project.

#### **6.1.1 APPLICANT TO BE RESPONSIBLE FOR**

- Design the Community Solar Project with reactive power capabilities necessary to operate within the full power factor range of 0.95 leading to 0.95 lagging as measured at the high side of the Applicant’s GSU transformer. This power factor range shall be dynamic and can be met using a combination of the inherent dynamic reactive power capability of the generator or inverter, dynamic reactive power devices and static reactive power devices to make up for losses.
- Design the Community Solar Project such that it can provide positive reactive support (i.e., supply reactive power to the system) immediately following the removal of a fault or other transient low voltage perturbations or install dynamic voltage support equipment. These additional dynamic reactive devices shall have correct protection settings such that the devices will remain on line and active during and immediately following a fault event.
- Equip the Community Solar Project with automatic voltage-control equipment and operate with the voltage regulation control mode enabled unless explicitly authorized to operate another control mode by the Public Utility.
- Operate the Community Solar Project so as to maintain the voltage at the POI, or other designated point as deemed appropriated by Public Utility, at a voltage schedule to be provided by the Public Utility following testing.
- Operate the Community Solar Project with a voltage droop.
- Have any Public Utility required studies, such as a voltage coordination study, performed and provide results to Public Utility. Any additional requirements identified in these studies will be the responsibility of the Applicant.
- Procure and install a step up transformer that will hold the phase to neutral voltages within limits when the generating facility is isolated with the Public Utility’s local system until the generation disconnects.

- Design, procure, install, and own a Public Utility approved 12.5 kV recloser containing a Schweitzer Engineering Laboratories (“SEL”) 651R relay/controller to monitor the voltage and frequency of the Generating Facility, to detect faults and to monitor current flow.
- Procure and install instrument transformers on the Public Utility side of the recloser.
- Input the settings provided by the Public Utility into the recloser relay.
- Provide the Public Utility Level 2 password control of the recloser relay.
- If deemed necessary provide the Public Utility an easement, approved by the Public Utility, to allow the Public Utility to construct a radio system to develop a link with the Public Utility’s Cabbage Hill communications site. The communications equipment will be installed in an enclosure. The Applicant shall provide the Public Utility unencumbered access to its communications enclosure.
- Terminate the control cable provided by the Public Utility in the recloser relay.
- Provide the Public Utility an easement, approved by the Public Utility, to allow the Public Utility to construct its line extension between its existing facilities and the Point of Change of Ownership.
- Provide Public Utility unfettered and maintained access to its interconnection facilities.
- Construct the Applicant’s last pole and span of conductor tying to the Public Utility’s interconnection facilities to the Public Utility’s standard and leave sufficient conductor for the Public Utility to terminate it on the first Public Utility structure.
- Arrange for and provide permanent retail service for power that will flow from the Public Utility’s system when the Project is not generating. This arrangement must be in place prior to approval for backfeed.
- Provide any construction or backup retail service necessary for the Project.
- Provide the Public Utility a Professional Engineer (“PE”) stamped maintenance plan for all Applicant facilities.

#### **6.1.2 PUBLIC UTILITY TO BE RESPONSIBLE FOR**

- Develop and provide the settings for Applicant’s recloser relay.
- Observe and provide acceptance of the relay settings in the Applicant recloser relay.
- Observe and provide acceptance of the Applicant’s design of the final span of conductor and pole.
- Terminate the Applicant’s final span of conductor onto the Public Utility owned interconnection facilities.
- Procure and install radio system and associated communications equipment within an enclosure to develop a radio link to the Cabbage Hill communications site.

- Provide the Applicant sufficient control cable for Applicant to terminate to its recloser relay. Observe the installation and confirm connectivity and functionality of the transfer trip communications path.
- Identify any necessary studies that the Applicant must have performed.

## **6.2 POINT OF INTERCONNECTION**

The following outlines the design, procurement, construction, installation, and ownership of equipment at the POI.

### **6.2.1 PUBLIC UTILITY TO BE RESPONSIBLE FOR**

- Design, procure, install, own and maintain at the Applicant's expense the required extension of the 12.5 kV facilities from Public Utility's existing facilities to the Point of Change of Ownership including a minimum of two poles, conductor, cutouts, fuses, jumpers and a gang operated switch.
- Terminate the Applicant's final span of conductor onto the Public Utility owned interconnection facilities.
- Design, procure and install 12.5 kV pole mounted revenue metering equipment for the Project including a revenue quality meter and instrument transformers.
- Provide and install a cellular connection for retail sales and generation accounting via the MV-90 translation system.

## **6.3 OTHER**

The following outlines the design, procurement, construction, installation, and ownership of equipment past the POI.

### **6.3.1 PUBLIC UTILITY TO BE RESPONSIBLE FOR**

- Distribution Circuit
  - Develop and implement a transfer trip scheme to trip the Applicant's generating facility offline for faults on the distribution line.
  - Install a radio system and associated communications equipment within an enclosure at line recloser UMDB1 to develop a link with the Public Utility's Cabbage Hill communications site.
  - Install a dead line checking control circuit at line recloser UMDB1.
- McKay Substation
  - Procure and install a three phase, 15 kV padmount instrument voltage transformer on the line side of circuit breaker 5W857.
  - Install a dead line checking control circuit.
  - Update communications as necessary to support the transfer trip scheme.
- Buckaroo Substation
  - Procure and install communications equipment to effectuate the new transfer trip communications path.

- Cabbage Hill Communications Site
  - Procure and install communications equipment to effectuate the new transfer trip communications paths between the Applicant's recloser site and the line recloser UMDB1.

## 7.0 COST ESTIMATE

The following estimate represents only scopes of work that will be performed by the Public Utility. Costs for any work being performed by the Applicant are not included.

<b>OCS024 Collector Station</b> <i>Line tap/extension, communications, relays setting development</i>	\$119,000
<b>Line Recloser UMDBI</b> <i>Install communications</i>	\$62,000
<b>Cabbage Hill Communications Site</b> <i>Install communications equipment</i>	\$20,000
<b>McKay Substation</b> <i>Install VT and communications equipment</i>	\$119,000
<b>Buckaroo Substation</b> <i>Install communications equipment</i>	\$5,000
<b>Total</b>	<b>\$325,000</b>

\*Any distribution line modifications identified in this report will require a field visit analysis in order to obtain a more thorough understanding of the specific requirements. The estimate provided above for this work could change substantially based on the results of this analysis. Until this field analysis is performed the Public Utility must develop the project schedule using conservative assumptions. The Applicant may request that the Public Utility perform this field analysis, at the Applicant's expense, prior to the execution of an Interconnection Agreement in order to obtain more cost and schedule certainty.

Note: Costs for any excavation, duct installation and easements shall be borne by the Applicant and are not included in this estimate. This estimate approximates the costs incurred by the Public Utility to interconnect this Community Solar Project to the Public Utility's electrical distribution or transmission system based upon the level of study completed to-date. The Applicant will be responsible for all actual costs, regardless of the estimated costs communicated to or approved by the Applicant.

## 8.0 SCHEDULE

Execute Interconnection Agreement	November 20, 2020
First Progress Payment Provided	November 20, 2020



*Applicant Initial Design Package Provided	December 4, 2020
Public Utility Engineering & Procurement Commences	January 11, 2021
Applicant Property/Permits/ROW Procured	April 30, 2021
*Applicant Final Design Package Provided	May 14, 2021
Public Utility Engineering Design Complete	June 18, 2021
Construction Begins	July 19, 2021
Applicant Maintenance and Commissioning Plans Provided	August 23, 2021
Applicant and Public Utility Construction Complete	October 29, 2021
Public Utility Commissioning Activities Complete	November 19, 2021
Public Utility Commissioning Document Review Complete	November 30, 2021
Applicant's Facilities Receive Backfeed Power	December 1, 2021
Initial Synchronization/Generation Testing	December 6, 2021
Commercial Operation	December 31, 2021

\*Applicant initial design package shall include final generating facility location, inverter/turbine selection, basic protection package, tie line route and collector system locations and data as applicable. Applicant final design package shall include PE stamped issued for construction ("IFC") drawings for generating facility, collector substation, tie line as well as an updated PSS/e model and updated WECC approved model, electromagnetic transient ("EMT") model and a detailed short circuit model of its generation system using the ASPEN OneLine short circuit simulation program as applicable. The WECC model parameters must be adjusted to reflect the plant's actual anticipated performance. The plant controller must be included in the model. If there is to be coordination between facilities or a master VAR controller, this must be included in the detailed WECC dynamic model, as well as in the PSS/e user-written model.

Please note, the time required to perform the scope of work identified in this report appears to result in a timeframe that does support the Applicant's requested commercial operation date December 31, 2021.

**9.0 PARTICIPATION BY AFFECTED SYSTEMS**

Public Utility has identified the following Affected Systems: Bonneville Power Administration

Copies of this report will be shared with each Affected System.

**10.0 APPENDICES**

Appendix 1: Higher Priority Requests

Appendix 2: Property Requirements

**10.1 APPENDIX A: HIGHER PRIORITY REQUESTS**

All active higher priority transmission service and/or generator interconnection requests will be considered in this study and are identified below. If any of these requests are withdrawn, the Public Utility reserves the right to restudy this request, as the results and conclusions contained within this study could significantly change.

Transmission/Generation Interconnection/Community Solar Queue Requests considered:

Q#	Size (MW)
547	18
666	1.98
1045	2.99
OCS007	0.875

**10.2 APPENDIX B: PROPERTY REQUIREMENTS****Requirements for rights of way easements**

Rights of way easements will be acquired by the Applicant in the Public Utility's name for the construction, reconstruction, operation, maintenance, repair, replacement and removal of Public Utility's Interconnection Facilities that will be owned and operated by PacifiCorp. Applicant will acquire all necessary permits for the project and will obtain rights of way easements for the project on Public Utility's easement form.

**Real Property Requirements for Point of Interconnection Substation**

Real property for a POI substation will be acquired by an Applicant to accommodate the Applicant's project. The real property must be acceptable to Public Utility. Applicant will acquire fee ownership for interconnection substation unless Public Utility determines that other than fee ownership is acceptable; however, the form and instrument of such rights will be at Public Utility's sole discretion. Any land rights that Applicant is planning to retain as part of a fee property conveyance will be identified in advance to Public Utility and are subject to the Public Utility's approval.

The Applicant must obtain all permits required by all relevant jurisdictions for the planned use including but not limited to conditional use permits, Certificates of Public Convenience and Necessity, California Environmental Quality Act, as well as all construction permits for the project.

Applicant will not be reimbursed through network upgrades for more than the market value of the property.

As a minimum, real property must be environmentally, physically, and operationally acceptable to Public Utility. The real property shall be a permitted or able to be permitted use in all zoning districts. The Applicant shall provide Public Utility with a title report and shall transfer property without any material defects of title or other encumbrances that are not acceptable to Public Utility. Property lines shall be surveyed and show all encumbrances, encroachments, and roads.

Examples of potentially unacceptable environmental, physical, or operational conditions could include but are not limited to:

- Environmental: known contamination of site; evidence of environmental contamination by any dangerous, hazardous or toxic materials as defined by any governmental agency; violation of building, health, safety, environmental, fire, land use, zoning or other such regulation; violation of ordinances or statutes of any governmental entities having jurisdiction over the property; underground or above ground storage tanks in area; known remediation sites on property; ongoing mitigation activities or monitoring activities; asbestos; lead-based paint, etc. A phase I environmental study is required for land being acquired in fee by the Public Utility unless waived by Public Utility.

- Physical: inadequate site drainage; proximity to flood zone; erosion issues; wetland overlays; threatened and endangered species; archeological or culturally sensitive areas; inadequate sub-surface elements, etc. Public Utility may require Applicant to procure various studies and surveys as determined necessary by Public Utility.
- Operational: inadequate access for Public Utility's equipment and vehicles; existing structures on land that require removal prior to building of substation; ongoing maintenance for landscaping or extensive landscape requirements; ongoing homeowner's or other requirements or restrictions (e.g., Covenants, Codes and Restrictions, deed restrictions, etc.) on property which are not acceptable to the Public Utility.