

Community Solar Project Interconnection
Community Solar Project System Impact Study Report

Completed for

(“Applicant”)
OCS024

Proposed Point of Interconnection
Circuit 5W857 out of McKay substation at 12.5 kV
(At approximately 45°37’55.08”N, 118°41’7.41”W)

July 22, 2020

TABLE OF CONTENTS

1.0 DESCRIPTION OF THE COMMUNITY SOLAR PROJECT	1
2.0 APPROVAL CRITERIA FOR TIER 4 INTERCONNECTION REVIEW	1
3.0 SCOPE OF THE STUDY	1
4.0 PROPOSED POINT OF INTERCONNECTION.....	1
5.0 STUDY ASSUMPTIONS.....	2
6.0 REQUIREMENTS	3
6.1 COMMUNITY SOLAR PROJECT MODIFICATIONS.....	3
6.2 TRANSMISSION SYSTEM MODIFICATIONS – INFORMATIONAL ONLY	4
6.3 DISTRIBUTION/TRANSMISSION LINE MODIFICATIONS	4
6.4 EXISTING BREAKER MODIFICATIONS – SHORT-CIRCUIT	4
6.5 PROTECTION REQUIREMENTS	5
6.6 DATA REQUIREMENTS (RTU)	5
6.7 COMMUNICATION REQUIREMENTS	5
6.7.1 Line Protection.....	<i>Error! Bookmark not defined.</i>
6.7.2 Data Delivery to the Control Centers	5
6.8 SUBSTATION REQUIREMENTS	6
6.9 METERING REQUIREMENTS	6
7.0 COST ESTIMATE	6
8.0 SCHEDULE	7
9.0 PARTICIPATION BY AFFECTED SYSTEMS.....	7
10.0 APPENDICES	7
10.1 APPENDIX 1: HIGHER PRIORITY REQUESTS	8
10.2 APPENDIX 2: PROPERTY REQUIREMENTS.....	10

1.0 DESCRIPTION OF THE COMMUNITY SOLAR PROJECT

(“Applicant”) proposed interconnecting 1.56 MW of new generation to PacifiCorp’s (“Public Utility”) Circuit 5W857 out of McKay substation located in Umatilla County, Oregon. The project (“Project”) will consist of twenty-six (26) Sungrow SG60KU-M 60 kW inverters for a total nameplate output of 1.56 MW. The requested commercial operation date is December 31, 2021.

The Public Utility has assigned the Project “OCS024.”

2.0 APPROVAL CRITERIA FOR TIER 4 INTERCONNECTION REVIEW

Pursuant to the Section I(1) of the Public Utility’s CSP Interconnection Procedures, a Public Utility must use the Tier 4 review procedures for an application to interconnect a Community Solar Project that meets the following requirements:

- (a) The Community Solar Project does not qualify for or failed to meet Tier 2 review requirements; and
- (b) The Community Solar Project must have a nameplate capacity of three (3) megawatts or less.

3.0 SCOPE OF THE STUDY

Pursuant to Section I(6)(g) of the CPS Interconnection Procedures, the System Impact Study Report shall consist of: (1) the underlying assumptions of the study; (2) a short circuit analysis; (2) a stability analysis; (3) a power flow analysis; (4) voltage drop and flicker studies; (5) protection and set point coordination studies; (6) grounding reviews; (7) the results of the analyses; and (8) any potential impediments to providing the requested Interconnection Service, including a non-binding informational NRIS portion that addresses the additions, modifications, and upgrades to the Public Utility’s Transmission System that would be required at or beyond the point at which the Interconnection Facilities connect to the Public Utility’s Transmission System to accommodate the interconnection of the CSP Project. In addition, the System Impact Study shall provide a list of facilities that are required as a result of the Community Solar Project request and non-binding good faith estimates of cost responsibility and time to construct.

4.0 PROPOSED POINT OF INTERCONNECTION

The Applicant’s proposed Community Solar Project is to be interconnected to the Public Utility’s distribution circuit 5W857 out of McKay substation via a new primary meter. The Point of Interconnection (“POI”) will be located near 45°37’55.08”N, 118°41’7.41”W long Tutuilla Church Road in Umatilla County, Oregon. Figure 1 below is a one line diagram that that illustrates the interconnection of the proposed generating facility to the Public Utility’s system.

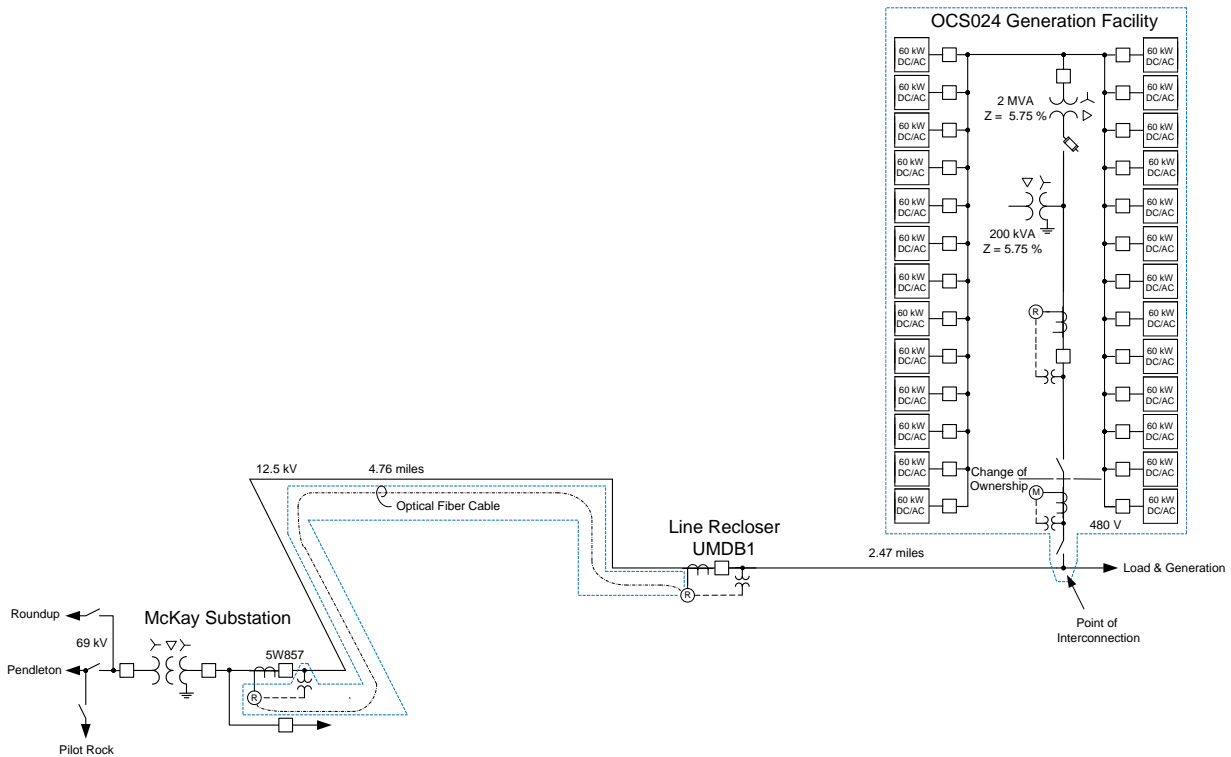


Figure 1: System One Line Diagram

5.0 STUDY ASSUMPTIONS

- All active higher-priority requests for transmission service and/or generator interconnection service (including requests in the traditional interconnection queue and other requests in the Community Solar queue) in the local area of the requested POI will be considered in this study and are listed in Appendix 1. If any of these requests are withdrawn, the Public Utility reserves the right to restudy this request, as the results and conclusions contained within this study could significantly change.
- The Applicant's request for interconnection service in and of itself does not convey transmission service.
- This study assumes the Project will be integrated into Public Utility's system at the agreed upon and/or proposed Point of Interconnection ("POI").
- The Applicant will construct and own any facilities required between the POI and the Project unless specifically identified by the Public Utility.
- Line reconductor or fiber underbuild required on existing poles will be assumed to follow the most direct path on the Public Utility's system. If during detailed design the path must be modified it may result in additional cost and timing delays for the Applicant's project.
- Generator tripping may be required for certain outages.
- All facilities will meet or exceed the minimum Western Electricity Coordinating Council ("WECC"), North American Electric Reliability Corporation ("NERC"), and Public Utility performance and design standards.
- The minimum daytime load on the McKay Substation 5W857 feeder including existing generation is estimated at 740 kW and – 580 KVAR (KVAR into substation). This estimate

was done using actual time of use metered data on the Pendleton substation 5W403 feeder that presently serves this area.

- The Small Generator Facility is expected to operate during daylight hours every day 7 days per week 12 months per year.
- The Small Generator Facility is expected to operate in constant power factor mode with a unity power factor setting unless otherwise requested by the Public Utility.
- This report is based on information available at the time of the study. It is the Applicant's responsibility to check the Public Utility's web site regularly for transmission system updates (<https://www.oasis.oati.com/ppw>)

6.0 REQUIREMENTS

6.1 COMMUNITY SOLAR PROJECT REQUIREMENTS

The Community Solar Project and Interconnection Equipment owned by the Applicant are required to operate under automatic voltage control with the voltage sensed electrically at the POI. The Community Solar Project should have sufficient reactive capacity to enable the delivery of 100 percent of the plant output to the POI at unity power factor measured at 1.0 per unit voltage under steady state conditions.

Generators capable of operating under voltage control with voltage droop are required to do so. Studies will be required to coordinate the voltage droop setting with other facilities in the area. In general, the Community Solar Project and Interconnection Equipment should be operated so as to maintain the voltage at the POI between 1.01 pu to 1.04 pu. At the Public Utility's discretion, these values might be adjusted depending on the operating conditions. Within this voltage range, the Community Solar Project should operate so as to minimize the reactive interchange between the Community Solar Project and the Public Utility's system (delivery of power at the POI at approximately unity power factor). The voltage control settings of the Community Solar Project must be coordinated with the Public Utility prior to energization (or interconnection). The reactive compensation must be designed such that the discreet switching of the reactive device (if required by the Applicant) does not cause step voltage changes greater than +/-3% on the Public Utility's system.

All generators must meet applicable WECC low voltage ride-through requirements as specified in the interconnection agreement.

As per NERC standard VAR-001-1, the Public Utility is required to specify voltage or reactive power schedule at the POI. Under normal conditions, the Public Utility's system should not supply reactive power to the Community Solar Project.

The Interconnection Customer will be required to install a transformer that will hold the phase to neutral voltages within limits when the generating facility is isolated with the Public Utility's local system until the generation disconnects. The proposed delta – wye step-up transformer will not accomplish the stabilization of the phase to neutral voltages on the 12.5 kV system. The circuit that the project is connecting to is a four wire multi-

grounded circuit with line to neutral connected load. Figure 1 shows the addition of a wye – delta grounding transformer of adequate power size and impedance that will meet the requirement.

At the POI the Interconnection Customer will be required to install a 12.5 kV circuit recloser. The circuit recloser will be equipment with a Schweitzer Engineering Laboratories (“SEL”) 651R relay/controller. The SEL 651R is to monitor the three phase voltage on the Public Utility side of the circuit recloser. The SEL 651R will communicate with the SEL relay at McKay substation over a combination of a radio communication system and an optical fiber cable.

6.2 TRANSMISSION SYSTEM MODIFICATIONS

Historical load records were reviewed to determine the Public Utility’s minimum daytime load in the Pendleton area 69 kV system. The minimum daytime load was determined to be less than all existing and higher priority Interconnection Requests. As a result, reverse power flow at the Bonneville Power Administration (“BPA”) Roundup substation 230-69 kV source is anticipated during light load conditions. As part of Interconnection Request Q1045 BPA will implement updated relay settings at Roundup substation to accommodate the reverse power flow. It is anticipated that if Q1045 does not proceed, the relay modifications would be required for the OCS024 Interconnection Request. However, final determination will need to be made by BPA as operator of the impacted equipment at BPA Roundup. It may be possible that the Interconnection Customer will need to executed an agreement with BPA to implement modifications to its system.

6.3 DISTRIBUTION/TRANSMISSION LINE MODIFICATIONS

The POI will need to be along Tutuilla Church Road west of regulators proposed to be installed north of Tutuilla Church Road approximately 150’ west of South Market Road on a separate Public Utility project. From the POI west of the intersection of South Market Road and Tutuilla Church Road the Public Utility will design, procure, and install a line extension onto private property to the Point of Change of Ownership. One pole will hold the Public Utility owned and operated gang switch, and on one pole primary metering units will be installed. Conductor from this primary metering pole will be installed one span to land on the first Applicant owned pole, the termination of this conductor at the Applicant’s pole will be the Point of Change of Ownership. These Public Utility facilities will require Right of Ways obtained by the Applicant as required in Appendix 2.

6.4 EXISTING BREAKER MODIFICATIONS – SHORT-CIRCUIT

The increase in the fault duty on the system as the result of the addition of the generation facility with photovoltaic arrays fed through 26 – 60 kW inverters connected to a 2 MVA 12.5 kV – 480 V transformer with 5.75% impedance will not push the fault duty above the interrupting rating of any of the existing fault interrupting equipment.

6.5 PROTECTION REQUIREMENTS

Between McKay Substation and the planned OCS024 generating facility there will be a line recloser. The minimum daytime load on circuit 5W857 out of McKay substation and beyond the line recloser are both below the maximum potential power output of the proposed OCS024 generating facility. For this reason the imbalance condition of the load and generation that the generating facility could be isolated with following the opening of either of these fault interrupting devices cannot be relied upon to cause the high speed disconnection of the generating facility for faults on the distribution system. A transfer trip circuit will need to be installed between the line recloser, McKay substation, and the OCS024 generating facility. Since most faults on overhead lines are temporary and the circuit can be restored as soon as all the sources of power to the fault have been disconnected the breaker 5W857 and the line recloser are both equipped with automatic reclosing. When either of the two fault interrupters open a transfer trip signal will be sent to the circuit recloser at the generating facility.

To ensure that the automatic reclosing of breaker 5W857 or the line recloser does not take place before the generating facility disconnects, a line checking control circuit will be installed at both locations. The dead line checking control circuit will delay the reclosing until the line is no longer energized to insure that no damage is done to any of the existing customers' equipment. The enabling of this type of controls will require the addition of a voltage instrument transformer ("VT") on the line side of breaker 5W857. The line recloser will be specified to be installed for the line recloser UMDB1 will be equipped to handle the dead line checking and the transfer trip.

The 12.5 kV circuit recloser that will be required to be installed at the collector for the OCS024 project will need to be equipped with a SEL 651R relay/controller and voltage instrument transformers mounted on the utility side of the circuit recloser. The 651R will perform the following protection functions:

1. Detect faults on the 12.5 kV equipment at the generating facility
2. Detect faults on the 12.5 kV line to McKay substation
3. Monitor the voltage and react to under or over frequency, and /or magnitude of the voltage
4. Receive transfer trip from McKay substation and the line recloser

6.6 DATA REQUIREMENTS (RTU)

Due to the power size of the generating facility no real time monitoring will be required by the Public Utility for the operation of the transmission network so no RTU will be required.

6.7 COMMUNICATION REQUIREMENTS

The Public Utility will install approximately five miles of 48-fiber, single-mode, ADSS cable on the distribution line between McKay substation and the UMDB1 line recloser. An SEL 3031 radio system will be installed between the UMDB1 line recloser and the OCS0024 collector POI recloser.

6.8 SUBSTATION REQUIREMENTS

The following major equipment has been preliminarily identified for this project and may change during actual design:

McKay Substation

- 1 – 3 phase, 15kV, pad mount, instrument voltage transformer

6.9 METERING REQUIREMENTS

Interchange Metering

The metering will be located on the high side of the Interconnection Customer generator step up transformer at the POI. The metering will be installed overhead on a pole per distribution DM construction standards. The Public Utility will procure, install, test, and own all revenue metering equipment. The metering will be bi-directional to measure KWH and KVARH quantities for both generation received and back feed retail load delivered. There will be no additional station service metering for supplying generation load. The metering generation and billing data will be remotely interrogated via the Public Utility's MV90 data acquisition system.

Station Service/Construction Power

The Interconnection Customer must arrange distribution voltage retail meter service for electricity consumed by the project when not generating. Temporary construction power metering shall conform to the Six State Electric Service Requirements manual. Applicant must call the PCCC Solution Center 1-800-640-2212 to arrange this service. Approval for back feed is contingent upon obtaining station service.

7.0 COST ESTIMATE

The following estimate represents only scopes of work that will be performed by the Public Utility. Costs for any work being performed by the Applicant are not included.

OCS024 Collector Station	\$111,000
<i>Line extension, communications, relay setting development</i>	
Line Recloser UMBD1	\$34,000
<i>Install communications.</i>	
Communications	\$217,000
<i>Install ~5 miles of fiber between recloser and substation</i>	
McKay Substation	\$158,000
<i>Install VT and communications.</i>	
Total	\$520,000

*Any distribution line modifications identified in this report will require a field visit analysis in order to obtain a more thorough understanding of the specific requirements. The estimate provided

above for this work could change substantially based on the results of this analysis. Until this field analysis is performed the Public Utility must develop the Project schedule using conservative assumptions. The Applicant may request that the Public Utility perform this field analysis, at the Applicant's expense, prior to the execution of an Interconnection Agreement in order to obtain more cost and schedule certainty.

Note: Costs for any excavation, duct installation and easements shall be borne by the Applicant and are not included in this estimate. This estimate is as accurate as possibly given the level of detailed study that has been completed to date and approximates the costs incurred by Public Utility to interconnect this Community Solar Project to Public Utility's electrical distribution or transmission system. An estimate, based on finer detail, will be calculated during the Facilities Study. The Applicant will be responsible for all actual costs, regardless of the estimated costs communicated to or approved by the Applicant.

8.0 SCHEDULE

The Public Utility estimates it will require approximately 12-15 months to design, procure and construct the facilities described in this report following the execution of an Interconnection Agreement. The schedule will be further developed and optimized during the Facilities Study.

Please note, the time required to perform the scope of work identified in this report appears to result in a timeframe that does support the Applicant's requested commercial operation date of December 31, 2021.

9.0 PARTICIPATION BY AFFECTED SYSTEMS

Public Utility has identified the following Affected Systems: Bonneville Power Administration

Copies of this report will be shared with each Affected System.

10.0 APPENDICES

Appendix 1: Higher Priority Requests

Appendix 2: Informational Network Resource Interconnection Service Assessment

Appendix 3: Property Requirements

10.1 APPENDIX 1: HIGHER PRIORITY REQUESTS

All active higher priority transmission service and/or generator interconnection and Community Solar Project requests will be considered in this study and are identified below. If any of these requests are withdrawn, the Public Utility reserves the right to restudy this request, as the results and conclusions contained within this study could significantly change.

Transmission/Generation Interconnection/Community Solar Queue Requests considered:

Q#	Size (MW)
547	18
666	1.98
1045	2.99
OCS007	0.875

10.2 APPENDIX 2: INFORMATIONAL NETWORK RESOURCE INTERCONNECTION SERVICE ASSESSMENT

The following is the Public Utility's assessment of the requirements that would be assigned to this interconnection request were it to be for network resource interconnection service. This assessment is for informational purposes only as part of the Oregon Community Solar program and is not required for the Applicant's interconnection request.

The study results described above reflect an energy resource interconnection service ("ERIS") evaluation, modified in the CSP program rules to examine only generation and load conditions local to the requested CSP project's interconnection point (sometimes referred to as the "zoomed in view"). The "zoomed in view" functions to: (1) study the project's proposed interconnection without considering certain existing or higher-queued requests outside of the local area; and (2) to inform whether the CSP facility must cap its project to mitigate, although not eliminate, the risk of potential deliverability-related network upgrades to accommodate the proposed CSP generator.

By contrast, the following informational section provides a network resource interconnection service ("NRIS") evaluation performed with traditional assumptions, i.e., not modified to examine only local generation and load conditions, but rather one that assumes that all existing interconnections, higher-queued requests for interconnection service (in both the traditional and CSP queue), and generators with executed contracts beyond the local area are in-service. Depending on the severity of the conditions created when absorbing additional generation (capped or not capped) in that broader, "zoomed out" area, the local area-focused generator size cap developed in the "zoomed in" examination may not be sufficient to mitigate the need for deliverability-related network upgrades. Regardless of this report's informational NRIS results, the deliverability-related network upgrades ultimately necessary to accommodate the proposed CSP generator will depend on conditions present when the future transmission service study is performed, as well as whether network upgrade alternatives are available at that time.

Considering existing generation and higher-queued requests to interconnect in the Pendleton area where the CSP generator proposes to interconnect, 1.56 MW of additional generation can be absorbed. As a result, the transmission provider determines that no additional network upgrades would be required for the aggregate of generation in the local area to be delivered to the aggregate of load on the transmission provider's transmission system (the NRIS study scope).

10.3 APPENDIX 3: PROPERTY REQUIREMENTS**Requirements for rights of way easements**

Rights of way easements will be acquired by the Applicant in the Public Utility's name for the construction, reconstruction, operation, maintenance, repair, replacement and removal of Public Utility's Interconnection Facilities that will be owned and operated by PacifiCorp. Applicant will acquire all necessary permits for the project and will obtain rights of way easements for the project on Public Utility's easement form.

Real Property Requirements for Point of Interconnection Substation

Real property for a POI substation will be acquired by an Applicant to accommodate the Applicant's project. The real property must be acceptable to Public Utility. Applicant will acquire fee ownership for interconnection substation unless Public Utility determines that other than fee ownership is acceptable; however, the form and instrument of such rights will be at Public Utility's sole discretion. Any land rights that Applicant is planning to retain as part of a fee property conveyance will be identified in advance to Public Utility and are subject to the Public Utility's approval.

The Applicant must obtain all permits required by all relevant jurisdictions for the planned use including but not limited to conditional use permits, Certificates of Public Convenience and Necessity, California Environmental Quality Act, as well as all construction permits for the project.

Applicant will not be reimbursed through network upgrades for more than the market value of the property.

As a minimum, real property must be environmentally, physically, and operationally acceptable to Public Utility. The real property shall be a permitted or able to be permitted use in all zoning districts. The Applicant shall provide Public Utility with a title report and shall transfer property without any material defects of title or other encumbrances that are not acceptable to Public Utility. Property lines shall be surveyed and show all encumbrances, encroachments, and roads.

Examples of potentially unacceptable environmental, physical, or operational conditions could include but are not limited to:

- Environmental: known contamination of site; evidence of environmental contamination by any dangerous, hazardous or toxic materials as defined by any governmental agency; violation of building, health, safety, environmental, fire, land use, zoning or other such regulation; violation of ordinances or statutes of any governmental entities having jurisdiction over the property; underground or above ground storage tanks in area; known remediation sites on property; ongoing mitigation activities or monitoring activities; asbestos; lead-based paint, etc. A phase I environmental study is

required for land being acquired in fee by the Public Utility unless waived by Public Utility.

- Physical: inadequate site drainage; proximity to flood zone; erosion issues; wetland overlays; threatened and endangered species; archeological or culturally sensitive areas; inadequate sub-surface elements, etc. Public Utility may require Applicant to procure various studies and surveys as determined necessary by Public Utility.
- Operational: inadequate access for Public Utility's equipment and vehicles; existing structures on land that require removal prior to building of substation; ongoing maintenance for landscaping or extensive landscape requirements; ongoing homeowner's or other requirements or restrictions (e.g., Covenants, Codes and Restrictions, deed restrictions, etc.) on property which are not acceptable to the Public Utility.