

Community Solar Project Interconnection
Community Solar Project Facilities Study Report

Completed for

(“Applicant”)
OCS002

Proposed Point of Interconnection
Circuit 5D126 out of Prineville substation at 12.5 kV
(At approximately 44°17’4.24”N, 120°53’18.28”W)

August 13, 2020

TABLE OF CONTENTS

| | | |
|-------|--|---|
| 1.0 | Description of the Project | 1 |
| 2.0 | Approval Criteria for Tier 4 Interconnection Review..... | 1 |
| 3.0 | Scope of the Study | 1 |
| 4.0 | Proposed Point of Interconnection..... | 1 |
| 5.0 | Study Assumptions | 2 |
| 6.0 | Requirements | 3 |
| 6.1 | Community Solar Project Modifications..... | 3 |
| 6.1.1 | APPLICANT TO BE RESPONSIBLE FOR | 3 |
| 6.1.2 | PUBLIC UTILITY TO BE RESPONSIBLE FOR | 4 |
| 6.2 | Point of Interconnection | 5 |
| 6.2.1 | APPLICANT TO BE RESPONSIBLE FOR | 5 |
| 6.2.2 | PUBLIC UTILITY TO BE RESPONSIBLE FOR | 5 |
| 6.3 | Other..... | 5 |
| 6.3.1 | PUBLIC UTILITY TO BE RESPONSIBLE FOR | 5 |
| 7.0 | Cost Estimate | 5 |
| 8.0 | Schedule..... | 6 |
| 9.0 | Participation by Affected Systems..... | 7 |
| 10.0 | Appendices..... | 7 |
| 10.1 | Appendix A: Higher Priority Requests..... | 8 |
| 10.2 | Appendix B: Property Requirements..... | 9 |

1.0 DESCRIPTION OF THE PROJECT

(“Applicant”) proposed interconnecting 0.9 MW of new generation to PacifiCorp’s (“Public Utility”) circuit 5D126 out of Prineville substation located in Crook County, Oregon. The project (“Project”) will consist of six (6) Sungrow 125HV 125 kW inverters and two (2) Sungrow 125HV inverters factory derated to 75 kW for a total requested nameplate output of 0.9 MW. The requested commercial operation date is 11/1/2020.

The Public Utility has assigned the project “OCS002.”

2.0 APPROVAL CRITERIA FOR TIER 4 INTERCONNECTION REVIEW

Pursuant to Public Utility Commission of Oregon Order 19-392 approved Community Solar Project procedures, a Public Utility must use the Tier 4 review procedures for an application to interconnect a Community Solar Project that meets the following requirements:

- (a) The Community Solar Project does not qualify for or failed to meet Tier 2 interconnection review requirements; and
- (b) The Community Solar Project must have a nameplate capacity of three (3) megawatts or less.

3.0 SCOPE OF THE STUDY

Pursuant to Public Utility Commission of Oregon Order 19-392 approved Community Solar Project procedures the Facilities Study Report shall consist of:

- (a) A detailed scope identifying the interconnection facilities and system upgrades required to safely interconnect the Community Solar Project including the electrical switching configuration of the equipment, including the transformer, switchgear, meters, and other station equipment as applicable;
- (b) A good-faith, non-binding estimate of the costs for the facilities and upgrades, including equipment, engineering, procurement, and construction costs, and;
- (c) A detailed estimate of the time required to procure, construct, and install the required interconnection facilities and system upgrades.

4.0 PROPOSED POINT OF INTERCONNECTION

The Applicant’s proposed Community Solar Project is to be interconnected to the Public Utility’s distribution circuit 5D126 out of Prineville substation. The Point of Interconnection (“POI”) will be located near 44°17’4.24”N, 120°53’18.28”W. Figure 1 below is a one line diagram that that illustrates the interconnection of the proposed generating facility to the Public Utility’s system.

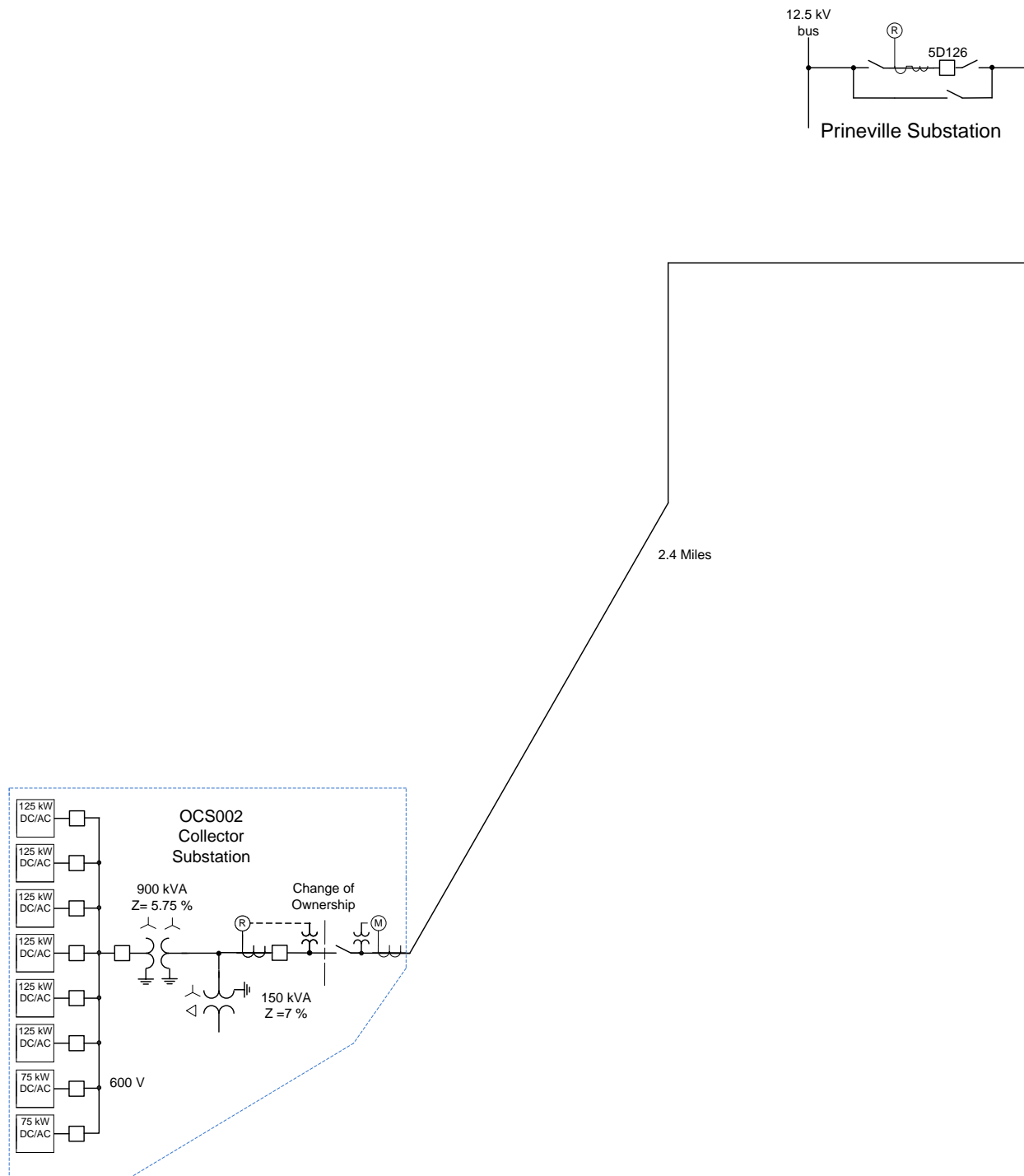


Figure 1: One Line Diagram

5.0 STUDY ASSUMPTIONS

- All active higher priority transmission service and/or generator interconnection and Community Solar Project requests will be considered in this study and are listed in Appendix

1. If any of these requests are withdrawn, the Public Utility reserves the right to restudy this request, as the results and conclusions contained within this study could significantly change.
- For study purposes there are two separate queues:
 - Transmission Service Queue: to the extent practical, all System Upgrades that are required to accommodate active transmission service requests will be modeled in this study.
 - Generation Interconnection Queue and Community Solar Queue: all relevant higher queue interconnection requests will be modeled in this study.
 - The Applicant's request for interconnection service in and of itself does not convey any other form or service.
 - This study assumes the Project will be integrated into Public Utility's system at the agreed upon and/or proposed POI.
 - The Applicant will construct and own the facilities required between the POI and the Project unless specifically identified by the Public Utility.
 - Line reconductor or fiber underbuild required on existing poles will be assumed to follow the most direct path on the Public Utility's system. If during detailed design the path must be modified it may result in additional cost and timing delays for the Applicant's Project.
 - Generator tripping may be required for certain outages.
 - All facilities will meet or exceed the minimum Western Electricity Coordinating Council ("WECC"), North American Electric Reliability Corporation ("NERC"), and Public Utility performance and design standards.
 - This report is based on information available at the time of the study. It is the Applicant's responsibility to check the Public Utility's web site regularly for transmission system updates (<https://www.oasis.oati.com/ppw>)

6.0 REQUIREMENTS

6.1 COMMUNITY SOLAR PROJECT MODIFICATIONS

The following outlines the design, procurement, construction, installation, and ownership of equipment at the Applicant's Community Solar Project.

6.1.1 APPLICANT TO BE RESPONSIBLE FOR

- Procure all necessary permits, lands, rights of way and easements required for the construction and continued maintenance of the Community Solar Project and collector substation.
- Design, procure, construct, own and maintain the Interconnection Customer's Community Solar Project and associated collector substation.
- Design the Community Solar Project with reactive power capabilities necessary to operate within the full power factor range of 0.95 leading to 0.95 lagging as measured at the high side of the Applicant's GSU transformer. This power factor range shall be dynamic and can be met using a combination of the inherent dynamic reactive power capability of the generator or inverter, dynamic reactive power devices and static reactive power devices to make up for losses.

- Design the Community Solar Project such that it can provide positive reactive support (i.e., supply reactive power to the system) immediately following the removal of a fault or other transient low voltage perturbations or install dynamic voltage support equipment. These additional dynamic reactive devices shall have correct protection settings such that the devices will remain on line and active during and immediately following a fault event.
- Equip the Community Solar Project with automatic voltage-control equipment and operate with the voltage regulation control mode enabled unless explicitly authorized to operate another control mode by the Public Utility.
- Operate the Community Solar Project so as to maintain the voltage at the POI, or other designated point as deemed appropriated by Public Utility, at a voltage schedule to be provided by the Public Utility following testing.
- Operate the Community Solar Project with a voltage droop.
- Design, procure, install, and own a Public Utility approved 12.5 kV recloser containing a Schweitzer Engineering Laboratories (“SEL”) 651R relay/controller to monitor the voltage and frequency of the Generating Facility, to detect faults and to monitor current flow.
- Procure and install instrument transformers on the Public Utility side of the recloser.
- Input the settings provided by the Public Utility into the recloser relay.
- Provide the Public Utility Level 2 password control of the recloser relay.
- Provide the Public Utility the necessary easement to allow the Public Utility to construct its line extension between its existing facilities and the Point of Change of Ownership.
- Provide Public Utility unfettered and maintained access to its interconnection facilities.
- Construct the Interconnection Customer’s underground conductor tying to the Public Utility’s interconnection facilities to the Public Utility’s standard and leave sufficient conductor for the Public Utility to terminate it in the Public Utility’s vault.
- Arrange for and provide permanent retail service for power that will flow from the Public Utility’s system when the Project is not generating. This arrangement must be in place prior to approval for backfeed.
- Provide any construction or backup retail service necessary for the Project.
- Provide the Public Utility a Professional Engineer (“PE”) stamped maintenance plan for all Interconnection Customer facilities.

6.1.2 PUBLIC UTILITY TO BE RESPONSIBLE FOR

- Develop and provide the settings for Interconnection Customer’s recloser relay.
- Observe and provide acceptance of the relay settings in the Interconnection Customer recloser relay.
- Observe and provide acceptance of the Interconnection Customer’s underground conductor to be tied into the Public Utility’s vault.

6.2 POINT OF INTERCONNECTION

The following outlines the design, procurement, construction, installation, and ownership of equipment at the POI.

6.2.1 APPLICANT TO BE RESPONSIBLE FOR

- Prepare, to Public Utility standards, a location for the Public Utility's vault and pad mounted enclosure. The easement necessary for this vault shall be procured by the Interconnection Customer on behalf of the Public Utility.
- Procure and install a Public Utility approved vault.
- Prepare, to Public Utility standards, all trenching and conduit from the location of the Public Utility dip pole, to the location of the vault.

6.2.2 PUBLIC UTILITY TO BE RESPONSIBLE FOR

- Provide the Interconnection Customer the standards for the Public Utility trenching, conduit and vault. Observe and confirm the locations of the equipment and that design standards are met.
- Design, procure, install, own and maintain at the Interconnection Customer's expense the required extension of the 12.5 kV facilities from Public Utility's existing facilities to the Point of Change of Ownership including a dip pole, conductor, cutouts, fuses, jumpers and a gang operated switch.
- Extend underground conductor from the new dip pole in the trenching and conduit provided by the Interconnection Customer to the vault installed by the Interconnection Customer.
- Procure and install a padmount enclosure.
- Design, procure and install 12.5 kV revenue metering equipment for the Project including a revenue quality meter and instrument transformers.
- Terminate the Interconnection Customer's conductor running from its generating facility into the new vault.
- Provide and install a cellular connection for retail sales and generation accounting via the MV-90 translation system.

6.3 OTHER

The following outlines the design, procurement, construction, installation, and ownership of equipment past the POI.

6.3.1 PUBLIC UTILITY TO BE RESPONSIBLE FOR

- Develop and implement new settings for the existing voltage regulator installed on southwest Crestview Road.

7.0 COST ESTIMATE

The following estimate represents only scopes of work that will be performed by the Public Utility. Costs for any work being performed by the Applicant are not included.

| | |
|---|----------|
| OCS002 POI Recloser <i>Develop relay settings</i> | \$10,000 |
|---|----------|

| | |
|---|----------|
| Distribution <i>Install dip, underground extension, metering, and regulator settings.</i> | \$60,000 |
|---|----------|

| | |
|--------------|-----------------|
| Total | \$70,000 |
|--------------|-----------------|

*Any distribution line modifications identified in this report will require a field visit analysis in order to obtain a more thorough understanding of the specific requirements. The estimate provided above for this work could change substantially based on the results of this analysis. Until this field analysis is performed the Public Utility must develop the project schedule using conservative assumptions. The Applicant may request that the Public Utility perform this field analysis, at the Applicant's expense, prior to the execution of an Interconnection Agreement in order to obtain more cost and schedule certainty.

This estimate approximates the costs incurred by the Public Utility to interconnect this Community Solar Project to the Public Utility's electrical distribution or transmission system based upon the level of study completed to-date. The Applicant will be responsible for all actual costs, regardless of the estimated costs communicated to or approved by the Applicant.

8.0 SCHEDULE

| | |
|--|--------------------|
| Execute Interconnection Agreement | September 4, 2020 |
| First Project Progress Payment | September 4, 2020 |
| *Interconnection Customer Initial Design Package Provided | September 25, 2020 |
| Transmission Provider Engineering & Procurement Commences | October 19, 2020 |
| Interconnection Customer Property/Permits/ROW Procured | December 18, 2020 |
| *Interconnection Customer Final Design Package Provided | March 12, 2021 |
| Transmission Provider Engineering Design Complete | April 23, 2021 |
| Construction Begins | June 7, 2021 |
| Interconnection Customer Maintenance and Commissioning Plans Provided | June 18, 2021 |
| Interconnection Customer and Transmission Provider Construction Complete | July 2, 2021 |
| Transmission Provider Commissioning Activities Complete | July 16, 2021 |

| | |
|--|---------------|
| Transmission Provider Commissioning Document Review Complete | July 23, 2021 |
| Interconnection Customer's Facilities Receive Backfeed Power | July 26, 2021 |
| Initial Synchronization/Generation Testing | July 28, 2021 |
| Commercial Operation | July 30, 2021 |

*Interconnection Customer initial design package shall include final generating facility location, inverter/turbine selection, basic protection package, tie line route and collector system locations and data as applicable. Interconnection Customer final design package shall include PE stamped issued for construction ("IFC") drawings for generating facility, collector substation, tie line as well as electromagnetic transient ("EMT") model and detailed short circuit model constructed using the ASPEN OneLine short circuit simulation program as applicable.

Please note, the time required to perform the scope of work identified in this report appears to result in a timeframe that does not support the Applicant's requested commercial operation date of November 1/2020.

9.0 PARTICIPATION BY AFFECTED SYSTEMS

Public Utility has identified the following Affected Systems: None

Copies of this report will be shared with each Affected System.

10.0 APPENDICES

Appendix 1: Higher Priority Requests

Appendix 2: Property Requirements

10.1 APPENDIX A: HIGHER PRIORITY REQUESTS

All active higher-priority requests for transmission service and/or generator interconnection service (including requests in the traditional interconnection queue and other requests in the Community Solar queue) in the local area of the requested POI will be considered in this study and are identified below. If any of these requests are withdrawn, the Public Utility reserves the right to restudy this request, as the results and conclusions contained within this study could significantly change.

Generation Interconnection/Community Solar Queue Requests considered:

| Queue # | Size (MW) |
|---------|-----------|
| 443 | 34.56 |
| 621 | 55 |
| 731 | 55 |
| 734 | 62.3 |
| 739 | 58.5 |
| 824 | 40 |
| 850 | 60.75 |
| 1093 | 600 |
| 1161 | 40 |
| 1162 | 80 |
| 1163 | 40 |
| 1164 | 80 |
| 1165 | 600 |
| OCS001 | 1.46 |

10.2 APPENDIX B: PROPERTY REQUIREMENTS

Requirements for rights of way easements

Rights of way easements will be acquired by the Applicant in the Public Utility's name for the construction, reconstruction, operation, maintenance, repair, replacement and removal of Public Utility's Interconnection Facilities that will be owned and operated by PacifiCorp. Applicant will acquire all necessary permits for the project and will obtain rights of way easements for the project on Public Utility's easement form.

Real Property Requirements for Point of Interconnection Substation

Real property for a POI substation will be acquired by an Applicant to accommodate the Applicant's project. The real property must be acceptable to Public Utility. Applicant will acquire fee ownership for interconnection substation unless Public Utility determines that other than fee ownership is acceptable; however, the form and instrument of such rights will be at Public Utility's sole discretion. Any land rights that Applicant is planning to retain as part of a fee property conveyance will be identified in advance to Public Utility and are subject to the Public Utility's approval.

The Applicant must obtain all permits required by all relevant jurisdictions for the planned use including but not limited to conditional use permits, Certificates of Public Convenience and Necessity, California Environmental Quality Act, as well as all construction permits for the project.

Applicant will not be reimbursed through network upgrades for more than the market value of the property.

As a minimum, real property must be environmentally, physically, and operationally acceptable to Public Utility. The real property shall be a permitted or able to be permitted use in all zoning districts. The Applicant shall provide Public Utility with a title report and shall transfer property without any material defects of title or other encumbrances that are not acceptable to Public Utility. Property lines shall be surveyed and show all encumbrances, encroachments, and roads.

Examples of potentially unacceptable environmental, physical, or operational conditions could include but are not limited to:

- Environmental: known contamination of site; evidence of environmental contamination by any dangerous, hazardous or toxic materials as defined by any governmental agency; violation of building, health, safety, environmental, fire, land use, zoning or other such regulation; violation of ordinances or statutes of any governmental entities having jurisdiction over the property; underground or above ground storage tanks in area; known remediation sites on property; ongoing mitigation activities or monitoring activities; asbestos; lead-based paint, etc. A phase I environmental study is required for land being acquired in fee by the Public Utility unless waived by Public Utility.

- Physical: inadequate site drainage; proximity to flood zone; erosion issues; wetland overlays; threatened and endangered species; archeological or culturally sensitive areas; inadequate sub-surface elements, etc. Public Utility may require Applicant to procure various studies and surveys as determined necessary by Public Utility.
- Operational: inadequate access for Public Utility's equipment and vehicles; existing structures on land that require removal prior to building of substation; ongoing maintenance for landscaping or extensive landscape requirements; ongoing homeowner's or other requirements or restrictions (e.g., Covenants, Codes and Restrictions, deed restrictions, etc.) on property which are not acceptable to the Public Utility.