

Community Solar Project Interconnection  
**Community Solar Project System Impact Study Report**

Completed for

**(“Applicant”)**  
**OCS057**

Proposed Point of Interconnection  
**Circuit 4M201 out of Dallas Substation at 20.8 kV**  
**(At approximately 44.942285°N, 123.311382°W)**

**May 14, 2021**

---

# TABLE OF CONTENTS

<b>1.0 DESCRIPTION OF THE COMMUNITY SOLAR PROJECT</b>	<b>2</b>
<b>2.0 APPROVAL CRITERIA FOR TIER 4 INTERCONNECTION REVIEW .....</b>	<b>2</b>
<b>3.0 SCOPE OF THE STUDY .....</b>	<b>2</b>
<b>4.0 PROPOSED POINT OF INTERCONNECTION .....</b>	<b>2</b>
<b>5.0 STUDY ASSUMPTIONS.....</b>	<b>4</b>
<b>6.0 REQUIREMENTS .....</b>	<b>4</b>
6.1 COMMUNITY SOLAR PROJECT REQUIREMENTS .....	4
6.2 TRANSMISSION SYSTEM MODIFICATIONS.....	5
6.3 DISTRIBUTION/TRANSMISSION LINE MODIFICATIONS .....	5
6.4 EXISTING BREAKER MODIFICATIONS – SHORT-CIRCUIT .....	6
6.5 PROTECTION REQUIREMENTS .....	7
6.6 DATA REQUIREMENTS (RTU) .....	7
6.7 COMMUNICATION REQUIREMENTS .....	8
6.8 SUBSTATION REQUIREMENTS .....	8
6.9 METERING REQUIREMENTS .....	8
<b>7.0 COST ESTIMATE .....</b>	<b>8</b>
<b>8.0 SCHEDULE .....</b>	<b>9</b>
<b>9.0 PARTICIPATION BY AFFECTED SYSTEMS .....</b>	<b>9</b>
<b>10.0 APPENDICES.....</b>	<b>9</b>
10.1 APPENDIX 1: HIGHER PRIORITY REQUESTS .....	11
10.2 APPENDIX 2: INFORMATIONAL NETWORK RESOURCE INTERCONNECTION SERVICE ASSESSMENT .....	12
10.3 APPENDIX 3: PROPERTY REQUIREMENTS.....	13
10.4 APPENDIX 4: TRANSMISSION/DISTRIBUTION STUDY RESULTS .....	15

## **1.0 DESCRIPTION OF THE COMMUNITY SOLAR PROJECT**

(“Applicant”) proposed interconnecting 1.0 MW of new generation to PacifiCorp’s (“Public Utility”) circuit 4M201 out of Dallas substation located in Polk County, Oregon. The project (“Project”) will consist of eight (8) Solectria XGI 1500 - 125 kW inverters for a total requested nameplate output of 1.0 MW. The requested commercial operation date is March of 2022.

The Public Utility has assigned the Project “OCS057.”

## **2.0 APPROVAL CRITERIA FOR TIER 4 INTERCONNECTION REVIEW**

Pursuant to the Section I(1) of the Public Utility’s CSP Interconnection Procedures, a Public Utility must use the Tier 4 review procedures for an application to interconnect a Community Solar Project that meets the following requirements:

- (a) The Community Solar Project does not qualify for or failed to meet Tier 2 review requirements; and
- (b) The Community Solar Project must have a nameplate capacity of three (3) megawatts or less.

## **3.0 SCOPE OF THE STUDY**

Pursuant to Section I(6)(g) of the CPS Interconnection Procedures, the System Impact Study Report shall consist of: (1) the underlying assumptions of the study; (2) a short circuit analysis; (2) a stability analysis; (3) a power flow analysis; (4) voltage drop and flicker studies; (5) protection and set point coordination studies; (6) grounding reviews; (7) the results of the analyses; and (8) any potential impediments to providing the requested Interconnection Service, including a non-binding informational NRIS portion that addresses the additions, modifications, and upgrades to the Public Utility’s Transmission System that would be required at or beyond the point at which the Interconnection Facilities connect to the Public Utility’s Transmission System to accommodate the interconnection of the CSP Project. In addition, the System Impact Study shall provide a list of facilities that are required as a result of the Community Solar Project request and non-binding good faith estimates of cost responsibility and time to construct.

## **4.0 PROPOSED POINT OF INTERCONNECTION**

The Applicant’s proposed Community Solar Project is to be interconnected to the Public Utility’s distribution circuit 4M201 out of Dallas substation via a 20.8 kV primary meter. The proposed Point of Interconnection (“POI”) will be located at approximately 44.942285°N, 123.311382°W located in Polk County, Oregon. Figure 1 below is a one line diagram that illustrates the interconnection of the proposed Community Solar Project to the Public Utility’s system.

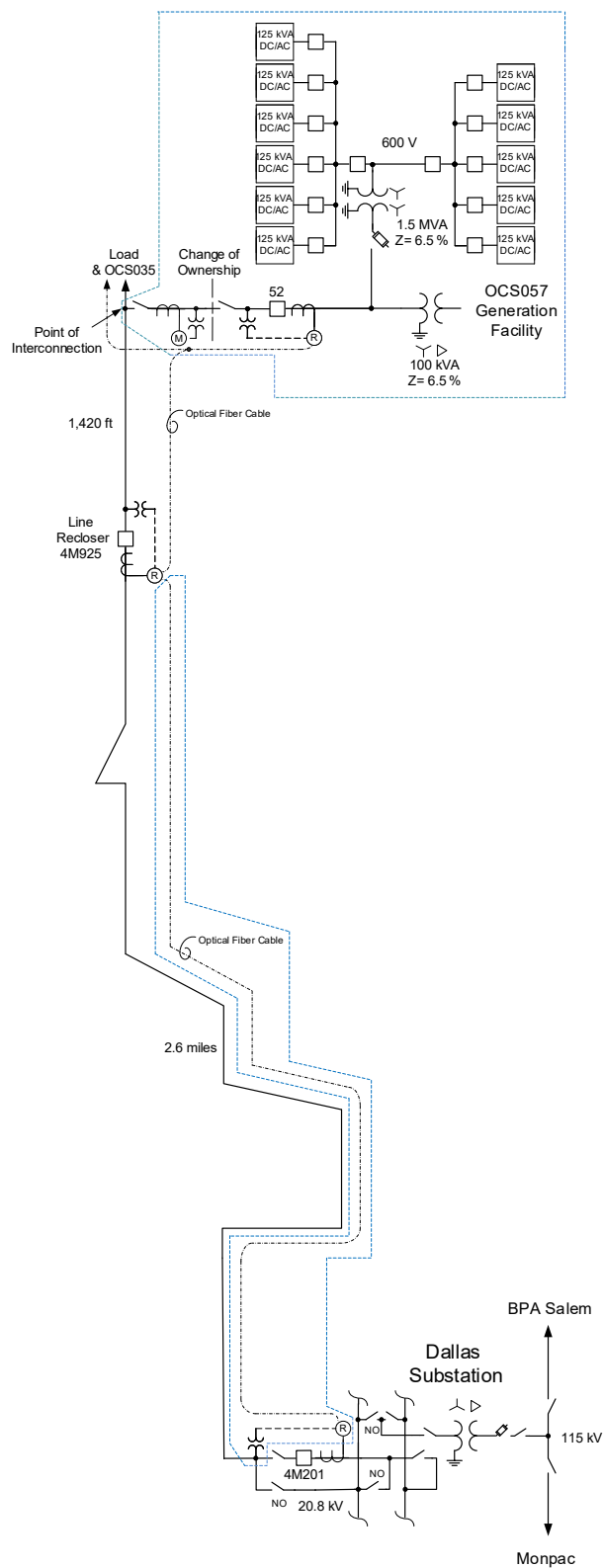


Figure 1: System One Line Diagram

## **5.0 STUDY ASSUMPTIONS**

- All active higher-priority requests for transmission service and/or generator interconnection service (including requests in the traditional interconnection queue and other requests in the Community Solar queue) in the local area of the requested POI will be considered in this study and are listed in Appendix 1. If any of these requests are withdrawn, the Public Utility reserves the right to restudy this request, as the results and conclusions contained within this study could significantly change.
- The Applicant's request for interconnection service in and of itself does not convey transmission service.
- This study assumes the Project will be integrated into Public Utility's system at the agreed upon and/or proposed POI.
- The Applicant will construct and own any facilities required between the POI and the Project unless specifically identified by the Public Utility.
- Line reconductor or fiber underbuild required on existing poles will be assumed to follow the most direct path on the Public Utility's system. If during detailed design the path must be modified it may result in additional cost and timing delays for the Applicant's project.
- Generator tripping may be required for certain outages.
- All facilities will meet or exceed the minimum Western Electricity Coordinating Council ("WECC"), North American Electric Reliability Corporation ("NERC"), and Public Utility performance and design standards.
- Fiber optic cable to be installed as part of higher priority interconnection request OCS035 is assumed to be in service.
- This report is based on information available at the time of the study. It is the Applicant's responsibility to check the Public Utility's web site regularly for transmission system updates (<https://www.oasis.oati.com/ppw>)

## **6.0 REQUIREMENTS**

### **6.1 COMMUNITY SOLAR PROJECT REQUIREMENTS**

The Community Solar Project and Interconnection Equipment owned by the Applicant are required to operate under automatic power factor control with the power factor sensed electrically at the POI. The Community Solar Project should have sufficient reactive capacity to enable the delivery of 100 percent of the plant output to the POI at unity power factor measured at 1.0 per unit voltage under steady state conditions.

In general, the Community Solar Project and Interconnection Equipment should be operated as to maintain the voltage at the POI between 1.01 pu to 1.04 pu. At the Public Utility's discretion, these values might be adjusted depending on the operating conditions. Within this voltage range, the Community Solar Project should operate as to minimize the reactive interchange between the Community Solar Project and the Public Utility's system (delivery of power at the POI at approximately unity power factor). The voltage control settings of the Community Solar Project must be coordinated with the Public Utility prior to energization (or interconnection). The reactive compensation must be designed such that

the discreet switching of the reactive device (if required by the Applicant) does not cause step voltage changes greater than  $\pm 3\%$  on the Public Utility's system.

All generators must meet applicable WECC low voltage ride-through requirements as specified in the interconnection agreement.

As per NERC standard VAR-001-1, the Public Utility is required to specify voltage or reactive power schedule at the POI. Under normal conditions, the Public Utility's system should not supply reactive power to the Community Solar Project.

The Applicant will be required to install a transformer that will hold the phase to neutral voltages within limits when the Community Solar Project is isolated with the Public Utility's local system until the generation disconnects. The circuit that the Project is connecting to is a four wire multi-grounded circuit with line to neutral connected load. The proposed grounding transformer with the 29% impedance used with the wye – wye step-up transformer will not accomplish the stabilization of the phase to neutral voltages on the 20.8 kV system. Figure 1 shows the addition of a wye – delta grounding transformer of adequate power size and impedance that will meet the requirement. The grounding transformer will need to be a 100 kVA transformer with 6.5 % impedance.

## **6.2 TRANSMISSION SYSTEM MODIFICATIONS**

No transmission system modifications are required to accommodate the Applicant's proposed facility.

## **6.3 DISTRIBUTION/TRANSMISSION LINE MODIFICATIONS**

Distribution construction items and study findings for the Project are listed below. Construction is based on Applicant's requested POI. Specific locations for pole placement may need to be revised for actual construction. It is important to note there is an upstream recloser 4M925 that will require new settings. Generation will cause reverse power flow through upstream recloser as MDL beyond recloser 4M925 is 315 kVA. 90% of MDL for circuit 4M201 aggregated with higher queued projects is 1.08 MW.

- Rebuild single phase tap to 3 phase tap at facility point ("FP") 01307005.0282904 extend three phase east across Perrydale road.
- Rebuild single phase fuse position at FP 01307005.0282905 with three phase 65T fuse position.
- Install new 3 phase tap pole will need to be installed just east of FP 01307005.0282905 fuse with 40T.
- Install new pole and 3 phase gang operated switch on the south side of road adjacent from the new 3 phase tap pole.
- Install new pole for primary metering adjacent to new switch pole.
- Extend 3 phase #2 AAAC approximately 75' south of new tap pole to new 3 phase gang operated load break switch.

- Extend new 3 phase #2 AAAC approximately 75' from new switch location to new primary metering location.

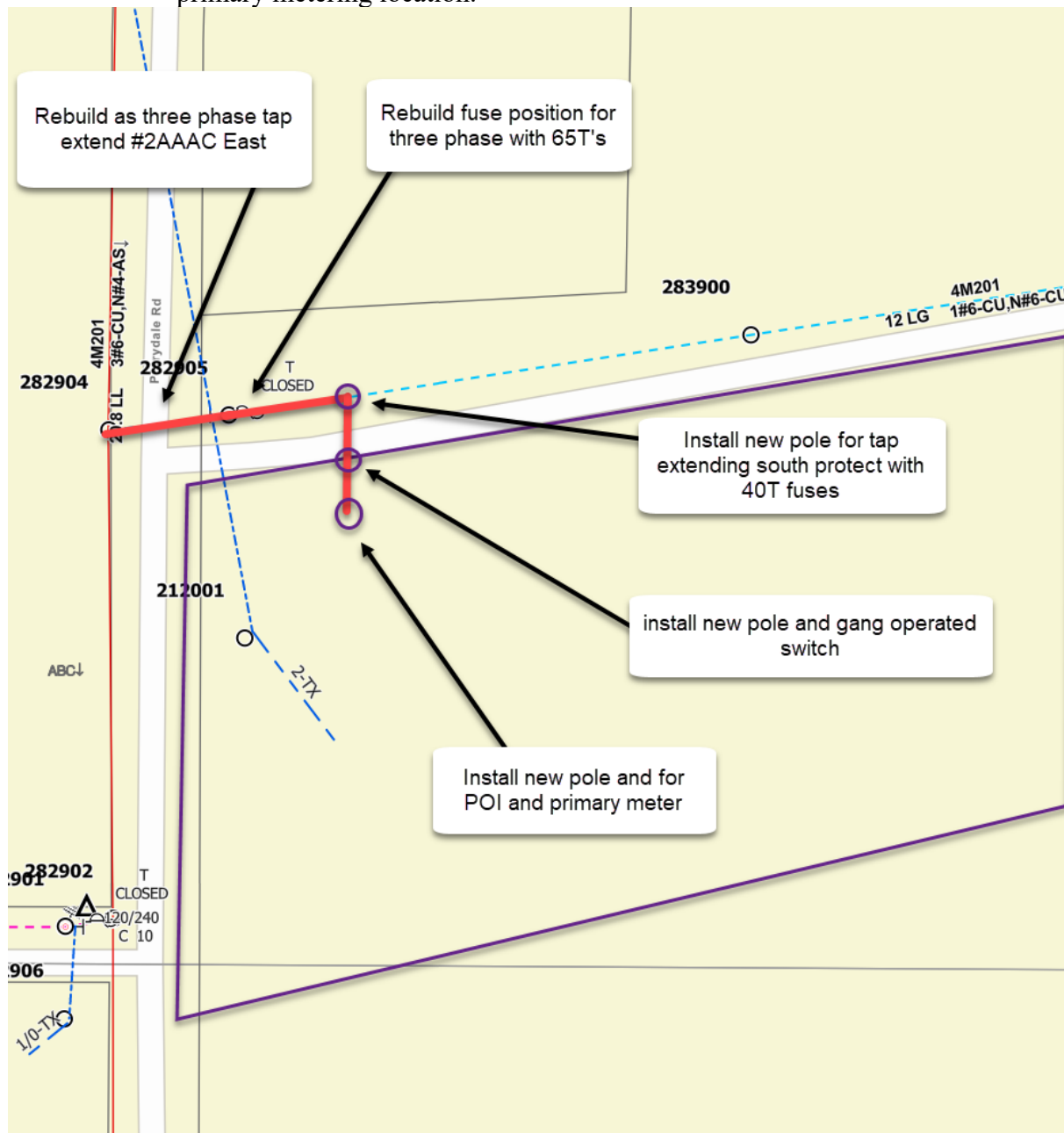


Figure 2: Construction diagram  
(all locations are approximate)

#### 6.4 EXISTING BREAKER MODIFICATIONS – SHORT-CIRCUIT

The increase in the fault duty on the system as the result of the addition of the Community Solar Project with photovoltaic arrays fed through 8 – 125 kW inverters connected to 1 –

1.0 MVA 20.8 kV – 600 V transformer with 6.5 % impedance will not push the fault duty above the interrupting rating of any of the existing fault interrupting equipment.

## **6.5 PROTECTION REQUIREMENTS**

The OCS057 Community Solar Project will need to disconnect in a high-speed manner for any fault on the 20.8 kV circuit 4M201 out of Dallas substation. The minimum daytime load on circuit 4M201 is 3.78 MW. The potential power production from the OCS057 and OCS035 projects, which are both proposing to connect to this feeder, does not exceed the minimum daytime load so the imbalance condition of the load and generation can be relied on to provide high-speed disconnection of the Community Solar Projects for faults on the distribution system.

The OCS057 Community Solar Project will be connected beyond line recloser 4M925 which is located on Perrydale Road. The Community Solar Project will need to disconnect in a high-speed manner for the operation of the line recloser. The minimum daytime load beyond the line recloser is below the maximum potential power output of the proposed project plus the OCS035 project. Because the imbalance between the islanded load and generation cannot be relied upon to cause high speed disconnection of the Community Solar Project, transfer trip circuits will need to be installed between recloser 4M925 and the POI recloser. As part of the OCS035 project it is planned to install optical fiber cable on the distribution line. The POI for the OCS035 project is planned to be located 1,630 feet north of the planned location for the POI for the OCS057 project. With this configuration the optical fiber cable for the earlier project can be looped into the OCS057 project to provide the communication circuit for the transfer trip. The line recloser 4M925 is planned to be modified to accommodate the earlier project so only relay setting changes will be required at the line recloser for this project.

The 20.8 kV circuit recloser planned to be installed at the OCS057 project will need to be equipped Schweitzer Engineering Laboratories (SEL) 651R relay/controller and voltage instrument transformers mounted on the utility side of the circuit recloser. The 651R will perform the following protection functions:

1. Detect faults on the 20.8 kV equipment at the solar-electric Community Solar Project
2. Detect faults on the 20.8 kV line to Dallas Substation
3. Monitor the voltage and react to under or over frequency, and /or magnitude of the voltage
4. Monitor the unbalance current flowing from the grounding transformer to prevent damage to the transformer due to phase unbalance conditions on the 20.8 kV line.
5. Receive transfer trip from the line recloser 4M925

## **6.6 DATA REQUIREMENTS (RTU)**

Due to the power size of the solar-electric Community Solar Project no real time monitoring will be required by the Public Utility for the operation of the transmission network so no RTU will be required.



## **6.7 COMMUNICATION REQUIREMENTS**

Fiber will be installed between recloser 4M925 and the OCS057 recloser. This will be either from the existing fiber installed for the OCS035 project or extended from the new fiber termination at 4M925. The fiber will be spliced either at recloser 4M925 or some point beyond that. New 48-fiber, single-mode ADSS cable will be installed from the splice point to the OCS057 recloser. It will be terminated in a patch panel in a pole-mount enclosure there. Fiber optic jumpers will be installed from the patch panel to the relays' FO transceivers. This will be done at recloser 4M925 as well.

## **6.8 SUBSTATION REQUIREMENTS**

No substation modifications are required to accommodate the Applicant's proposed facility

## **6.9 METERING REQUIREMENTS**

### Interchange Metering

The metering will be located on the high side of the Applicant generator step up transformer at the POI. The metering transformers will be installed overhead on a pole per distribution DM construction standards. The meter itself will be installed on the pole near the ground. The Public Utility will procure, install, test, and own all revenue metering equipment. The metering will be bi-directional to measure KWH and KVARH quantities for both generation received and back feed retail load delivered. There will be no additional station service metering for supplying generation load. The metering generation and billing data will be remotely interrogated via the Public Utility's MV90 data acquisition system.

### Station Service/Construction Power

The Applicant must arrange distribution voltage retail meter service for electricity consumed by the project when not generating. Temporary construction power metering shall conform to the Six State Electric Service Requirements manual. Applicant must call the PCCC Solution Center 1-800-640-2212 to arrange this service. Approval for back feed is contingent upon obtaining station service.

## **7.0 COST ESTIMATE**

The following estimate represents only scopes of work that will be performed by the Public Utility. Costs for any work being performed by the Applicant are not included.

<b>Project Administration</b> <i>Project management, administrative support</i>	\$11,000
<b>Relay Setting Development</b> <i>P&amp;C Engineer and Relay Technician</i>	\$13,000
<b>Distribution</b> <i>Line extension, add three-phase, tap &amp; fuse</i>	\$45,000

<b>Metering</b>	<b>\$13,000</b>
<i>Metering equipment</i>	
<b>Communications</b>	<b>\$52,000</b>
<i>Communications at POI and recloser, fiber install</i>	
<b>Other Costs</b>	<b>\$31,000</b>
<i>Capital surcharge and contingency</i>	
<b>Total</b>	<b>\$165,000</b>

\*Any distribution line modifications identified in this report will require a field visit analysis in order to obtain a more thorough understanding of the specific requirements. The estimate provided above for this work could change substantially based on the results of this analysis. Until this field analysis is performed the Public Utility must develop the Project schedule using conservative assumptions. The Applicant may request that the Public Utility perform this field analysis, at the Applicant's expense, prior to the execution of an Interconnection Agreement in order to obtain more cost and schedule certainty.

Note: Costs for any excavation, duct installation and easements shall be borne by the Applicant and are not included in this estimate. This estimate is as accurate as possibly given the level of detailed study that has been completed to date and approximates the costs incurred by Public Utility to interconnect this Community Solar Project to Public Utility's electrical distribution or transmission system. An estimate, based on finer detail, will be calculated during the Facilities Study. The Applicant will be responsible for all actual costs, regardless of the estimated costs communicated to or approved by the Applicant.

## **8.0 SCHEDULE**

The Public Utility estimates it will require approximately 12.15 months to design, procure and construct the facilities described in this report following the execution of an Interconnection Agreement. The schedule will be further developed and optimized during the Facilities Study.

Please note, the time required to perform the scope of work identified in this report appears to result in a timeframe that does not support the Applicant's requested commercial operation date of March of 2022.

## **9.0 PARTICIPATION BY AFFECTED SYSTEMS**

Public Utility has identified the following Affected Systems: Bonneville Power Administration

Copies of this report will be shared with each Affected System.

## **10.0 APPENDICES**

Appendix 1: Higher Priority Requests

Appendix 2: Informational Network Resource Interconnection Service Assessment

Appendix 3: Property Requirements

## Appendix 4: Transmission Study Results

**10.1 APPENDIX 1: HIGHER PRIORITY REQUESTS**

All active higher priority transmission service and/or generator interconnection and Community Solar Project requests will be considered in this study and are identified below. If any of these requests are withdrawn, the Public Utility reserves the right to restudy this request, as the results and conclusions contained within this study could significantly change.

Transmission/Generation Interconnection/Community Solar Queue Requests considered:

<b>Q#</b>	<b>Size (MW)</b>
1149	0.108
1150	0.504
1151	0.285
OCS008	2.16
OCS026	1.5
OCS035	2.25
OCS038	.981
OCS041	1.875
OCS056	2.9

## **10.2 APPENDIX 2: INFORMATIONAL NETWORK RESOURCE INTERCONNECTION SERVICE ASSESSMENT**

The study results described above reflect an energy resource interconnection service (“ERIS”) evaluation, modified in the CSP program rules to examine only generation and load conditions local to the requested CSP project’s interconnection point (sometimes referred to as the “zoomed in view”). The “zoomed in view” functions to: (1) study the project’s proposed interconnection without considering certain existing or higher-queued requests outside of the local area; and (2) to inform whether the CSP facility must cap its project to mitigate, although not eliminate, the risk of potential deliverability-related network upgrades to accommodate the proposed CSP generator.

By contrast, the following informational section provides a network resource interconnection service (“NRIS”) evaluation performed with traditional assumptions, i.e., not modified to examine only local generation and load conditions, but rather one that assumes that all existing interconnections, higher-queued requests for interconnection service (in both the traditional and CSP queue), and generators with executed contracts beyond the local area are in-service. Depending on the severity of the conditions created when absorbing additional generation (capped or not capped) in that broader, “zoomed out” area, the local area-focused generator size cap developed in the “zoomed in” examination may not be sufficient to mitigate the need for deliverability-related network upgrades. Regardless of this report’s informational NRIS results, the deliverability-related network upgrades ultimately necessary to accommodate the proposed CSP generator will depend on conditions present when the future transmission service study is performed, as well as whether network upgrade alternatives are available at that time.

Considering existing generation and higher-queued requests to interconnect in the Willamette Valley area where the CSP generator proposes to interconnect, 1 MW of additional generation can be absorbed. As a result, the Public Utility determines that no additional network upgrades would be required for the aggregate of generation in the local area to be delivered to the aggregate of load on the Public Utility’s transmission system (the NRIS study scope).

### **10.3 APPENDIX 3: PROPERTY REQUIREMENTS**

#### **Requirements for rights of way easements**

Rights of way easements will be acquired by the Applicant in the Public Utility's name for the construction, reconstruction, operation, maintenance, repair, replacement and removal of Public Utility's Interconnection Facilities that will be owned and operated by PacifiCorp. Applicant will acquire all necessary permits for the project and will obtain rights of way easements for the project on Public Utility's easement form.

#### **Real Property Requirements for Point of Interconnection Substation**

Real property for a POI substation will be acquired by an Applicant to accommodate the Applicant's project. The real property must be acceptable to Public Utility. Applicant will acquire fee ownership for interconnection substation unless Public Utility determines that other than fee ownership is acceptable; however, the form and instrument of such rights will be at Public Utility's sole discretion. Any land rights that Applicant is planning to retain as part of a fee property conveyance will be identified in advance to Public Utility and are subject to the Public Utility's approval.

The Applicant must obtain all permits required by all relevant jurisdictions for the planned use including but not limited to conditional use permits, Certificates of Public Convenience and Necessity, California Environmental Quality Act, as well as all construction permits for the project.

Applicant will not be reimbursed through network upgrades for more than the market value of the property.

As a minimum, real property must be environmentally, physically, and operationally acceptable to Public Utility. The real property shall be a permitted or able to be permitted use in all zoning districts. The Applicant shall provide Public Utility with a title report and shall transfer property without any material defects of title or other encumbrances that are not acceptable to Public Utility. Property lines shall be surveyed and show all encumbrances, encroachments, and roads.

Examples of potentially unacceptable environmental, physical, or operational conditions could include but are not limited to:

- Environmental: known contamination of site; evidence of environmental contamination by any dangerous, hazardous or toxic materials as defined by any governmental agency; violation of building, health, safety, environmental, fire, land use, zoning or other such regulation; violation of ordinances or statutes of any governmental entities having jurisdiction over the property; underground or above ground storage tanks in area; known remediation sites on property; ongoing mitigation activities or monitoring activities; asbestos; lead-based paint, etc. A phase I environmental study is required for land being acquired in fee by the Public Utility unless waived by Public Utility.

- Physical: inadequate site drainage; proximity to flood zone; erosion issues; wetland overlays; threatened and endangered species; archeological or culturally sensitive areas; inadequate sub-surface elements, etc. Public Utility may require Applicant to procure various studies and surveys as determined necessary by Public Utility.
- Operational: inadequate access for Public Utility's equipment and vehicles; existing structures on land that require removal prior to building of substation; ongoing maintenance for landscaping or extensive landscape requirements; ongoing homeowner's or other requirements or restrictions (e.g., Covenants, Codes and Restrictions, deed restrictions, etc.) on property which are not acceptable to the Public Utility.

**10.4 APPENDIX 4: TRANSMISSION/DISTRIBUTION STUDY RESULTS****Transmission:**

Three base cases were developed to represent heavy summer, heavy winter and light spring load conditions. A Power flow analysis was performed on each case for two system configurations described below.

1. Normal transmission configuration: Dallas substation in a radial 115 kV system configuration fed from BPA's Salem substation.
2. Contingency transmission configuration: 115 kV transmission line from Dallas to BPA Salem substation is open. Close switch 2M88 at Monpac to BPA Monmouth to feed Dallas out of BPA Salem substation.

Each Power flow analysis was conducted pre and post OCS057. The study focused on the 115 kV system in Dallas and Monmouth area and distribution voltages at Dallas substation. Voltage and thermal limitation of surrounding substation buses and lines were monitored.

The results for the transmission study concluded that steady state and post transient voltages are within acceptable limits. No thermal violations were identified. The proposed OCS057 project does not result in additional deficiencies to the Public Utility's transmission system.

Fiber optic cable planned to be installed as part of OCS035 is a contingent facility for this interconnection request.