

Community Solar Project Interconnection
Community Solar Project System Impact Study Report

Completed for

(“Applicant”)
OCS007

Proposed Point of Interconnection
Circuit 5W703 out of Athena Substation at 12.5 kV
(at approximately 45.806928°N, 118.445049°W)

May 18, 2020

TABLE OF CONTENTS

1.0 DESCRIPTION OF THE COMMUNITY SOLAR PROJECT	3
2.0 APPROVAL CRITERIA FOR TIER 4 INTERCONNECTION REVIEW	3
3.0 SCOPE OF THE STUDY	3
4.0 PROPOSED POINT OF INTERCONNECTION	3
5.0 STUDY ASSUMPTIONS.....	4
6.0 REQUIREMENTS	5
6.1 COMMUNITY SOLAR PROJECT MODIFICATIONS	5
6.2 DISTRIBUTION/TRANSMISSION LINE MODIFICATIONS	6
6.3 EXISTING BREAKER MODIFICATIONS – SHORT-CIRCUIT	6
6.4 PROTECTION REQUIREMENTS	6
6.5 COMMUNICATION REQUIREMENTS	7
6.6 SUBSTATION REQUIREMENTS	7
6.7 METERING REQUIREMENTS	7
7.0 COST ESTIMATE	8
8.0 SCHEDULE	9
9.0 PARTICIPATION BY AFFECTED SYSTEMS	9
10.0 APPENDICES.....	9
10.1 APPENDIX 1: HIGHER PRIORITY REQUESTS	10
10.1 APPENDIX 2: INFORMATIONAL NETWORK RESOURCE INTERCONNECTION SERVICE ASSESSMENT	11
10.2 APPENDIX 3: PROPERTY REQUIREMENTS.....	12

1.0 DESCRIPTION OF THE COMMUNITY SOLAR PROJECT

(“Applicant”) proposed interconnecting 0.875 MW of new generation to PacifiCorp’s (“Public Utility”) circuit 5W703 out of Athena substation located in Umatilla County, Oregon. The project (“Project”) will consist of seven Sungrow SG125HV 125 kW inverters for a total requested output of 0.875 MW. The requested commercial operation date is July 1, 2021.

The Public Utility has assigned the Project “OCS007.”

2.0 APPROVAL CRITERIA FOR TIER 4 INTERCONNECTION REVIEW

Pursuant to the Section I(1) of the Public Utility’s CSP Interconnection Procedures, a Public Utility must use the Tier 4 review procedures for an application to interconnect a Community Solar Project that meets the following requirements:

- (a) The Community Solar Project does not qualify for or failed to meet Tier 2 review requirements; and
- (b) The Community Solar Project must have a nameplate capacity of three (3) megawatts or less.

3.0 SCOPE OF THE STUDY

Pursuant to Section I(6)(g) of the CPS Interconnection Procedures, the System Impact Study Report shall consist of: (1) the underlying assumptions of the study; (2) a short circuit analysis; (2) a stability analysis; (3) a power flow analysis; (4) voltage drop and flicker studies; (5) protection and set point coordination studies; (6) grounding reviews; (7) the results of the analyses; and (8) any potential impediments to providing the requested Interconnection Service, including a non-binding informational NRIS portion that addresses the additions, modifications, and upgrades to the Public Utility’s Transmission System that would be required at or beyond the point at which the Interconnection Facilities connect to the Public Utility’s Transmission System to accommodate the interconnection of the CSP Project. In addition, the System Impact Study shall provide a list of facilities that are required as a result of the Community Solar Project request and non-binding good faith estimates of cost responsibility and time to construct.

4.0 PROPOSED POINT OF INTERCONNECTION

The Applicant’s proposed Community Solar Project is to the Public Utility’s distribution feeder 5W703 out of Athena substation via a new 12.5 kV overhead primary meter. The Point of Interconnection will be at existing pole identified as map string 01104035.0 and facility point number 215300 located between the towns of Weston and Athena, Oregon south of the intersection of Banister and Johnson roads. Figure 1 below is a one line diagram that that illustrates the interconnection of the proposed generating facility to the Public Utility’s system.

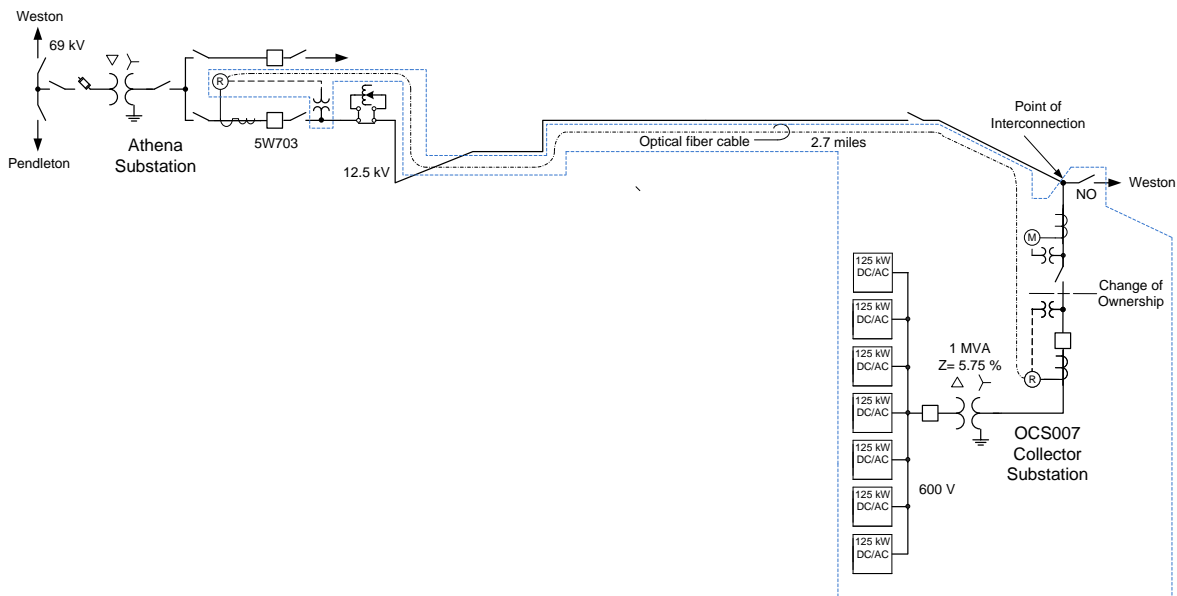


Figure 1: System One Line Diagram

5.0 STUDY ASSUMPTIONS

- All active higher priority transmission service and/or generator interconnection and Community Solar Project requests will be considered in this study and are listed in Appendix 1. If any of these requests are withdrawn, the Public Utility reserves the right to restudy this request, as the results and conclusions contained within this study could significantly change.
- For study purposes there are two separate queues:
 - Generation Interconnection Queue and Community: All relevant higher queue interconnection requests will be modeled in this study.
 - Solar Queue: Any relevant higher queue community solar requests will be modeled in this study.
- The Applicant's request for interconnection service in and of itself does not convey any other form of service.
- This study assumes the Project will be integrated into Public Utility's system at the agreed upon and/or proposed Point of Interconnection. ('POI').
- The Applicant will construct and own any facilities required between the Point of Interconnection and the Project unless specifically identified by the Public Utility.
- Line reconductor or fiber underbuild required on existing poles will be assumed to follow the most direct path on the Public Utility's system. If during detailed design the path must be modified it may result in additional cost and timing delays for the Applicant's project.
- Generator tripping may be required for certain outages.
- All facilities will meet or exceed the minimum Western Electricity Coordinating Council ("WECC"), North American Electric Reliability Corporation ("NERC"), and Public Utility performance and design standards.

- Time of use metering does not exist for Athena substation loading. The daytime minimum demand for the feeder 5W703 is estimated based on peak kW demand readings on the circuit, no kVAR demands exist for this feeder.
- The minimum daytime load on 5W703 including existing generation is estimated at 535 KVA.
- The Small Generator Facility is expected to operate during daylight hours every day 7 days per week 12 months per year.
- This report is based on information available at the time of the study. It is the Applicant's responsibility to check the Public Utility's web site regularly for transmission system updates (<https://www.oasis.oati.com/ppw>)

6.0 REQUIREMENTS

6.1 COMMUNITY SOLAR PROJECT MODIFICATIONS

The Community Solar Project and Interconnection Equipment owned by the Applicant are required to operate under automatic voltage control with the voltage sensed electrically at the Point of Interconnection. The Community Solar Project should have sufficient reactive capacity to enable the delivery of 100 percent of the plant output to the Point of Interconnection at unity power factor measured at 1.0 per unit voltage under steady state conditions.

Generators capable of operating under voltage control with a voltage drop are required to do so. Studies will be required to coordinate the voltage drop setting with other facilities in the area. In general, the Community Solar Project and Interconnection Equipment should be operated so as to maintain the voltage at the Point of Interconnection between 1.01 pu to 1.04 pu. At the Public Utility's discretion, these values might be adjusted depending on the operating conditions. Within this voltage range, the Community Solar Project should operate so as to minimize the reactive interchange between the Community Solar Project and the Public Utility's system (delivery of power at the Point of Interconnection at approximately unity power factor). The voltage control settings of the Community Solar Project must be coordinated with the Public Utility prior to energization (or interconnection). The reactive compensation must be designed such that the discreet switching of the reactive device (if required by the Applicant) does not cause step voltage changes greater than +/-3% on the Public Utility's system.

All generators must meet applicable WECC low voltage ride-through requirements as specified in the interconnection agreement.

As per NERC standard VAR-001-1, the Public Utility is required to specify voltage or reactive power schedule at the Point of interconnection. Under normal conditions, the Public Utility's system should not supply reactive power to the Community Solar Project.

The Applicant is required to procure, install, own and operate a lockable gang operated switch which is able to provide a visible open as their first device after the point of change of ownership.

Certain contingency configurations may warrant generation curtailment until the system returns to a normal state. This includes an outage of the 69 kV line from Pendleton, resulting in loss of service and, under certain circumstances, restoration from the alternate 69 kV line sourced from Walla Walla substation.

6.2 DISTRIBUTION/TRANSMISSION LINE MODIFICATIONS

Distribution modifications made by the Public Utility are required as follows:

- The requested POI is presently fed from the Weston substation feeder 5W7 and the Applicant has requested interconnection to the Athena substation feeder 5W703. To interconnect to the requested source the Public Utility will design, procure, and install a three phase gang operated switch on Banister road east of the POI at map string 01104035.0 facility point 215200. This new switch would be a normally open and the existing normally open switch located west of the POI would be changed to a normally closed switch.
- The Applicant's project site is approximately 550' south of the POI on Johnson road. The Public Utility will design, procure, and install an overhead three phase line extension from the POI to the project site. A detailed design will be needed and will utilize three #2 AAAC primary and one #2 AAAC neutral conductors. This line is planned to be located inside the Johnson road public road right of way.
- From the end of line extension along Johnson Road the Public Utility will design, procure, and install a line extension onto private property to the point of change of ownership. One pole will hold the Public Utility owned and operated gang switch, and on one pole primary metering units will be installed. Conductor from this primary metering pole will be installed one span to land on the first Applicant owned pole, the termination of this conductor at the Applicant's pole will be the point of change of ownership. The Applicant's final pole shall be constructed to Public Utility standards. These Public Utility facilities will require rights of way obtained by the applicant as required in Appendix 2.
- To maintain the ability to serve ANSI range A voltages to all customers the Athena substation 12.5 kV regulator R265's control settings will require adjustment by the Public Utility.

6.3 EXISTING BREAKER MODIFICATIONS – SHORT-CIRCUIT

The increase in the fault duty on the system as the result of the addition of the generation facility with photovoltaic arrays fed through 7 – 125 kW inverters connected to a 1 MVA 12.5 kV – 600 V transformer with 5.75% impedance will not push the fault duty above the interrupting rating of any of the existing fault interrupting equipment.

6.4 PROTECTION REQUIREMENTS

The OCS007 generation facility will need to disconnect from the network in a high speed manner for faults on the 12.5 kV line on circuit 5W703 out of Athena Substation. The minimum daytime load on circuit 5W703 is below the maximum potential power output of

the proposed OCS007 generating facility. For this reason the imbalance condition of the load and generation cannot be relied upon to cause the high speed disconnection of the generating facilities for faults on the distribution system. A transfer trip circuit will need to be installed between Athena substation and the OCS007 generation facility. Since most faults on overhead lines are temporary and the circuit can be restored as soon as all the sources of power to the fault have been disconnected the breaker 5W703 at Athena substation is equipped with automatic reclosing. When breaker 5W703 opens the transfer trip signal will be sent to the circuit recloser at the generation facility. An optical fiber cable will need to be installed between Athena substation and the circuit recloser. The transfer trip signal will be sent over the optical fiber cable.

To insure that the automatic reclosing of breaker 5W703 does not take place before the generating facility disconnects, a dead line checking control circuit will be installed. The dead line checking control circuit will delay the reclosing until the line is no longer energized to insure that no damage is done to any of the existing customers' equipment. The enabling of this type of control will require the addition of a voltage instrument transformer on the line side of breaker 5W703. To accommodate both the transfer trip and the dead line checking a new relay will be installed at Athena substation as part of the OCS007 Project.

The 12.5 kV circuit recloser planned to be installed at the POI for the OCS007 project will require a Schweitzer Engineering Laboratories (SEL) 651R relay/controller and voltage instrument transformers mounted on the utility side of the circuit recloser. The 651R will perform the following protection functions:

1. Detect faults on the 12.5 kV equipment at the solar-electric generation facility
2. Detect faults on the 12.5 kV line to Athena Substation
3. Monitor the voltage and react to under or over frequency, and /or magnitude of the voltage
4. Receive transfer trip from Athena Substation

6.5 COMMUNICATION REQUIREMENTS

The Public Utility will install approximately 3 miles of ADSS cable on the distribution line Athena substation and the Applicant's recloser. The fiber will be terminated in patch panels and jumpers installed to the relays' fiber optic modems on both ends.

6.6 SUBSTATION REQUIREMENTS

Athena Substation

Three 12.5 kV VTs will be installed at the substation. Existing feeder relay panels will be replaced.

6.7 METERING REQUIREMENTS

Interchange Metering

The metering will be located on the high side of the customer generator step up transformer at the Point of Delivery. The metering will be installed overhead on a pole per distribution

DM construction standards. The Public Utility will procure, install, test, and own all revenue metering equipment. The metering will be bi-directional to measure KWH and KVARH quantities for both generation received and back-up retail load delivered. There will be no additional station service metering for supplying generation load. The metering generation and billing data will be remotely interrogated via the Public Utility's MV90 data acquisition system.

Station Service/Construction Power

The Applicant must arrange distribution voltage retail meter service for electricity consumed by the project when not generating. Temporary construction power metering shall conform to the Six State Electric Service Requirements manual. Applicant must call the PCCC Solution Center 1-800-640-2212 to arrange this service. Approval for back feed is contingent upon obtaining station service.

7.0 COST ESTIMATE

The following estimate represents only scopes of work that will be performed by the Public Utility. Costs for any work being performed by the Applicant are not included.

OCS007 Collector Station	\$82,000
<i>Communications & metering equipment, relay settings</i>	
Distribution Circuit	\$187,000
<i>Gang switch, circuit reconfiguration, fiber installation and extension of line.</i>	
Athena Substation	\$304,000
<i>Protection, communications & metering equipment.</i>	
Total	\$573,000

*Any distribution line modifications identified in this report will require a field visit analysis in order to obtain a more thorough understanding of the specific requirements. The estimate provided above for this work could change substantially based on the results of this analysis. Until this field analysis is performed the Public Utility must develop the Project schedule using conservative assumptions. The Applicant may request that the Public Utility perform this field analysis, at the Applicant's expense, prior to the execution of an Interconnection Agreement in order to obtain more cost and schedule certainty.

Note: Costs for any excavation, duct installation and easements shall be borne by the Applicant and are not included in this estimate. This estimate is as accurate as possibly given the level of detailed study that has been completed to date and approximates the costs incurred by Public Utility to interconnect this Community Solar Project to Public Utility's electrical distribution or transmission system. An estimate, based on finer detail, will be calculated during the Facilities Study. The Applicant will be responsible for all actual costs, regardless of the estimated costs communicated to or approved by the Applicant.

8.0 SCHEDULE

The Public Utility estimates it will require approximately 15-18 months to design, procure and construct the facilities described in this report following the execution of an Interconnection Agreement. The schedule will be further developed and optimized during the Facilities Study.

Please note, the time required to perform the scope of work identified in this report appears to result in a timeframe that does not support the Applicant's requested commercial operation date of July 1, 2021.

9.0 PARTICIPATION BY AFFECTED SYSTEMS

Public Utility has identified the following Affected Systems: None

Copies of this report will be shared with each Affected System.

10.0 APPENDICES

Appendix 1: Higher Priority Requests

Appendix 2: Informational Network Resource Interconnection Service Assessment

Appendix 3: Property Requirements

10.1 APPENDIX 1: HIGHER PRIORITY REQUESTS

All active higher priority transmission service and/or generator interconnection and Community Solar Project requests will be considered in this study and are identified below. If any of these requests are withdrawn, the Public Utility reserves the right to restudy this request, as the results and conclusions contained within this study could significantly change.

Generation Interconnection/Community Solar Queue Requests considered:

Q#	Size (MW)
547	18
666	1.98
1045	2.99

10.1 APPENDIX 2: INFORMATIONAL NETWORK RESOURCE INTERCONNECTION SERVICE ASSESSMENT

The study results described above reflect an energy resource interconnection service (“ERIS”) evaluation, modified in the CSP program rules to examine only generation and load conditions local to the requested CSP project’s interconnection point (sometimes referred to as the “zoomed in view”). The “zoomed in view” functions to: (1) study the project’s proposed interconnection without considering certain existing or higher-queued requests outside of the local area; and (2) to inform whether the CSP facility must cap its project to mitigate, although not eliminate, the risk of potential deliverability-related network upgrades to accommodate the proposed CSP generator.

By contrast, the following informational section provides a network resource interconnection service (“NRIS”) evaluation performed with traditional assumptions, i.e., not modified to examine only local generation and load conditions, but rather one that assumes that all existing interconnections, higher-queued requests for interconnection service (in both the traditional and CSP queue), and generators with executed contracts beyond the local area are in-service. Depending on the severity of the conditions created when absorbing additional generation (capped or not capped) in that broader, “zoomed out” area, the local area-focused generator size cap developed in the “zoomed in” examination may not be sufficient to mitigate the need for deliverability-related network upgrades. Regardless of this report’s informational NRIS results, the deliverability-related network upgrades ultimately necessary to accommodate the proposed CSP generator will depend on conditions present when the future transmission service study is performed, as well as whether network upgrade alternatives are available at that time.

Considering existing generation and higher-queued requests to interconnect in the Pendleton area where the CSP generator proposes to interconnect, 0.875 MW of additional generation can be absorbed. As a result, the transmission provider determines that no additional network upgrades would be required for the aggregate of generation in the local area to be delivered to the aggregate of load on the transmission provider’s transmission system (the NRIS study scope).

10.2 APPENDIX 3: PROPERTY REQUIREMENTS

Requirements for rights of way easements

Any Rights of Way easements will be acquired by the Applicant in the Public Utility's name for the construction, reconstruction, operation, maintenance, repair, replacement and removal of Public Utility's Interconnection Facilities that will be owned and operated by PacifiCorp. Applicant will acquire all necessary permits for the project and will obtain rights of way easements for the project on Public Utility's easement form.

Real Property Requirements for Point of Interconnection Substation (if required)

Real property for a point of interconnection substation will be acquired by an Applicant to accommodate the Applicant's project. The real property must be acceptable to Public Utility. Applicant will acquire fee ownership for interconnection substation unless Public Utility determines that other than fee ownership is acceptable; however, the form and instrument of such rights will be at Public Utility's sole discretion. Any land rights that Applicant is planning to retain as part of a fee property conveyance will be identified in advance to Public Utility and are subject to the Public Utility's approval.

The Applicant must obtain all permits required by all relevant jurisdictions for the planned use including but not limited to conditional use permits, Certificates of Public Convenience and Necessity, California Environmental Quality Act, as well as all construction permits for the project.

Applicant will not be reimbursed through network upgrades for more than the market value of the property.

As a minimum, real property must be environmentally, physically, and operationally acceptable to Public Utility. The real property shall be a permitted or able to be permitted use in all zoning districts. The Applicant shall provide Public Utility with a title report and shall transfer property without any material defects of title or other encumbrances that are not acceptable to Public Utility. Property lines shall be surveyed and show all encumbrances, encroachments, and roads.

Examples of potentially unacceptable environmental, physical, or operational conditions could include but are not limited to:

- Environmental: known contamination of site; evidence of environmental contamination by any dangerous, hazardous or toxic materials as defined by any governmental agency; violation of building, health, safety, environmental, fire, land use, zoning or other such regulation; violation of ordinances or statutes of any governmental entities having jurisdiction over the property; underground or above ground storage tanks in area; known remediation sites on property; ongoing mitigation activities or monitoring activities; asbestos; lead-based paint, etc. A phase I environmental study is required for land being acquired in fee by the Public Utility unless waived by Public Utility.

- Physical: inadequate site drainage; proximity to flood zone; erosion issues; wetland overlays; threatened and endangered species; archeological or culturally sensitive areas; inadequate sub-surface elements, etc. Public Utility may require Applicant to procure various studies and surveys as determined necessary by Public Utility.
- Operational: inadequate access for Public Utility's equipment and vehicles; existing structures on land that require removal prior to building of substation; ongoing maintenance for landscaping or extensive landscape requirements; ongoing homeowner's or other requirements or restrictions (e.g., Covenants, Codes and Restrictions, deed restrictions, etc.) on property which are not acceptable to the Public Utility.